



# Rear Bumper

## 2023+ Colorado & Canyon

### NEW PRODUCT

Please visit [www.aev-conversions.com](http://www.aev-conversions.com) to view the most current installation guide for this product.

This is a new product and we want to make sure that you receive the latest and most accurate information based on customer feedback, product revisions, and/or model year updates. We value customer feedback, so we encourage you to contact our Technical Support department if you have any suggestions on how to make the installation of this product easier or if you have any questions regarding the installation of this product. AEV's Technical Support can be reached by email at [tech@aev-conversions.com](mailto:tech@aev-conversions.com) or by giving us a call at (248)-926-0256.



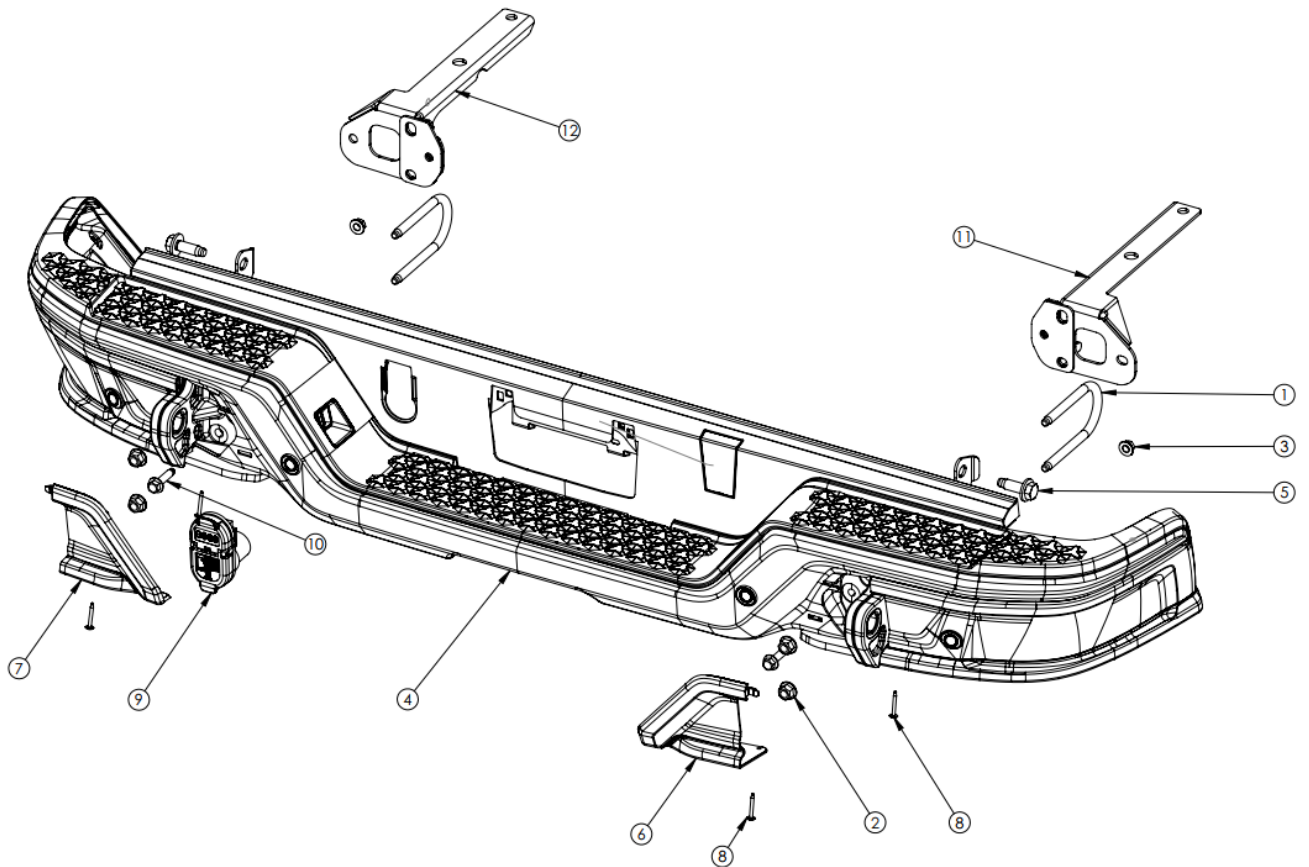
PLEASE READ BEFORE YOU START

To guarantee a quality installation, we recommend reading these instructions thoroughly before beginning any work. These instructions assume a certain amount of mechanical ability and are not written nor intended for someone not familiar with auto repair.

INCLUDED PARTS	QTY	REQUIRED TOOLS
Bumper Assembly	1	15mm-Deep Ratchet Socket
Mounting Kit	1	18mm-Deep Ratchet Socket
		21mm Ratchet Socket
		T-15 Torx Bit
		Common Hand Tools



ITEM NO.	PART #	DESCRIPTION	QTY.
1	A32B4019AA	M12 X 1.75 U-BOLT	2
2	11546379	M12 X 1.75 HEX FLANGE NUT	4
3	11546378	M10 X 1.5 HEX FLANGE NUT	2
4	A32B0051AJ	BUMPER ASSEMBLY	1
5	11561075	STOCK FACTORY M14 Bolt	2
6	A32B0048AB	MOLDING SUB ASSEMBLY, RH INNER	1
7	A32B0049AB	MOLDING SUB ASSEMBLY, LH INNER	1
8	11611886	M4.2 X 1.41 X 35 TORX PAN HEAD SCREW	4
9	84056018	TRAILER CONNECTOR PLUG	1
10	11588741	M10 X 1.5 X 45 FLANGE BOLT	2
11	A32B00406AC	HITCH REINF RH WELDMENT	1
12	A32B00407AC	HITCH REINF LH WELDMENT	1



## I. VEHICLE PREPARATION

1. First, disconnect all cables attached to the factory bumper.
  - i. Detach the main trailer power cable and detach trailer signal lights



*Figure 1*



- ii. Pull out the associated push-in fasteners of the trailer power cable and trailer signal lights. These clips need to be disconnected to remove factory bumper.

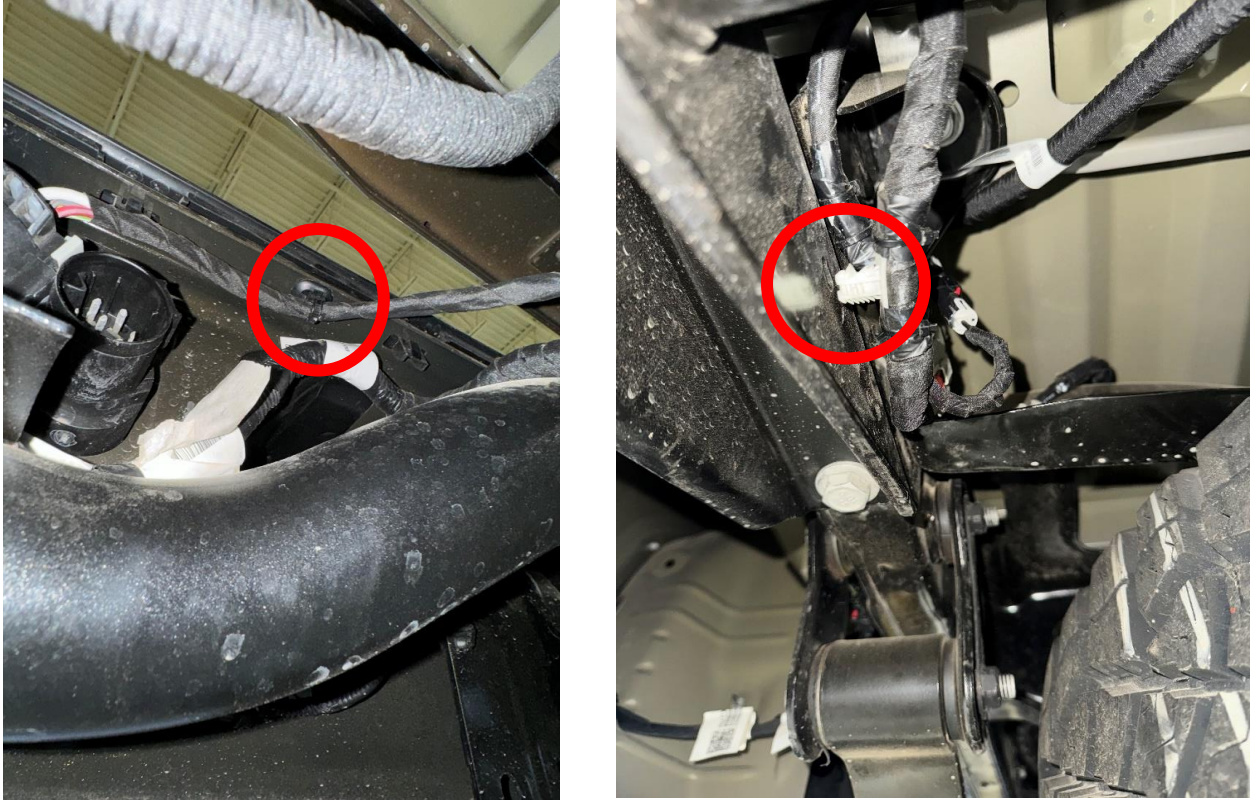


Figure 2

- iii. Disengage the trailer harness in these two locations.



Figure 3

- iv. Cut the 2 zip-ties shown below to separate the bumper trailer harness from the vehicle harness. Be careful to not damage the harness when removing the zip tie.

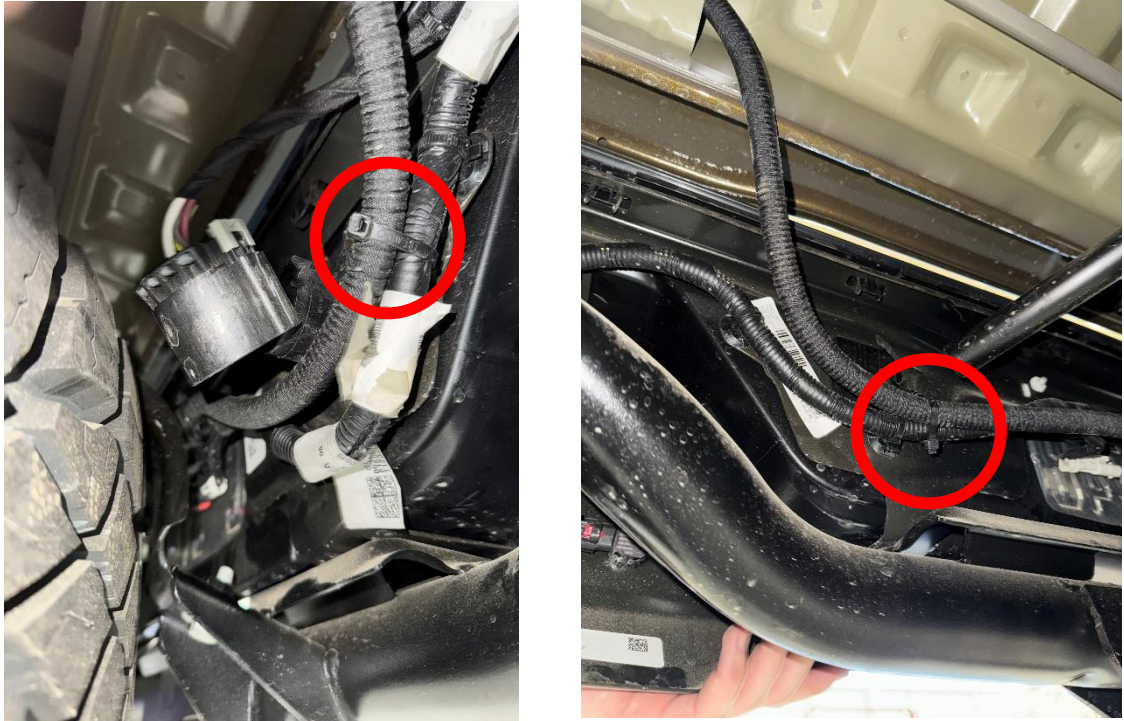
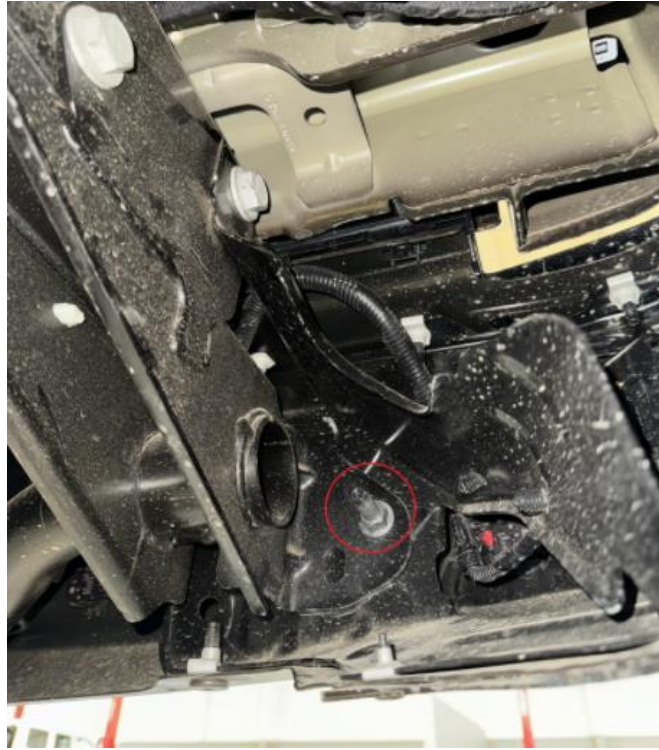


Figure 4



2. Remove the M10 nuts that secure the factory bumper to the hitch plate. There is 1 nut per side that needs to be removed.



*Figure 5*

3. Remove the M14 bolt at the top of the hitch that attaches the bumper bracket to the frame. There will be 1 on each side of the vehicle. Set these bolts aside for later use.



*Figure 6*



4. Once you verify all harness cables are disconnected between the factory bumper and vehicle, slide the bumper rearward to remove the bumper from the frame of the vehicle. Set bumper aside.
5. Once the factory bumper is off the vehicle, remove the 2 vertical M14 frame bolts found on bottom side of the hitch on each side. Set these bolts aside for later use.



*Figure 7*





## II. AEV REAR BUMPER PREPARATION

6. Transfer the trailer plug receptacle from factory bumper to the AEV rear bumper.
  - i. To remove the receptacle, squeeze the metal retaining clips and simultaneously pull the receptacle through the front of the bumper.



Figure 8

- ii. Install the receptacle onto AEV rear bumper by sliding it through the front side of the bumper. With the palm of your hand, firmly press the receptable until you hear an audible “click”. You may have to pull and squeeze the clips from the backside to seat the clips fully into the AEV rear bumper. Test to make sure the clips are fully seated by trying to pull the receptacle away from the bumper.



Figure 9



7. It is recommended to swap the SBZA (Side Blind Zone Alert) sensors from the stock OEM rear bumper to the AEV rear bumper. This is to ensure proper sensor functionality due to each vehicle's sensor being programmed to the specific vehicle VIN in the GM plant.
  - i. Start by removing the three M4 Torx screws that hold the sensor bracket to the AEV bumper (Fig. 10).

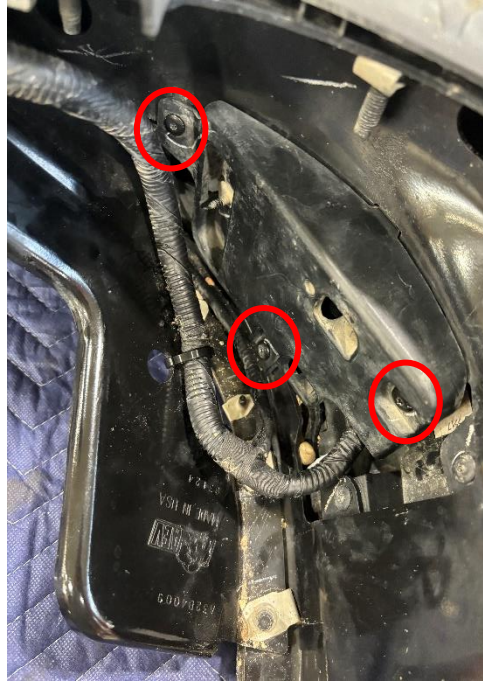


Figure 10

- ii. Remove the M4 screw that holds the sensor to the sensor bracket. Remove and unplug the sensor, discard this SBZA sensor. Repeat for the other side (Fig. 11).



Figure 11



8. Repeat this process for removing the SBZA sensors from the stock OEM bumper you took off your vehicle. Keep the AEV and OE stock bumper SBZA sensors separate after removal, these sensors have the same part numbers between the bumpers, but it is important to note where each came from.
9. Once all SBZA sensors are removed, re-install the SBZA sensors **from the stock OEM bumper into the AEV rear bumper**. **NOTE:** These sensors are labeled left-hand and right hand. Ensure the correct SBZA sensor is installed on the associated side by referring to the labelling and tab location (Figure 12).



Figure 12

10. Insert supplied license plate nuts into the AEV rear bumper as pictured below.

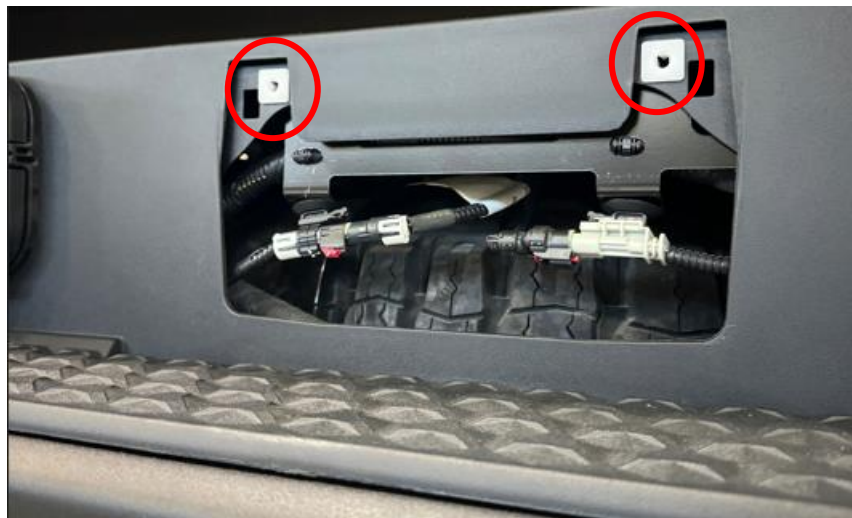


Figure 13





11. Slide AEV Rear bumper brackets (1 bracket per side) into the open end of the frame horn on each side of the vehicle.
  - i. The brackets are specific for each side of the vehicle. The outer slotted hole of the bracket should line up with the factory hitch holes once in position.



*Figure 14*





12. The hitch holes located on the bottom side of hitch frame should line up with the bracket holes as pictured below.



*Figure 15*



13. Re-using the factory M14 bolts from Step 5 loose install the AEV hitch bracket to the frame. Once all bolts are started and the brackets are in position, torque to required spec found in Step 15.



Figure 16

### III. AEV REAR BUMPER INSTALLATION

14. Lift the AEV bumper and align the studs on the backside of the bumper to the outer-most slots on the hitch bracket. Slide the bumper onto the hitch and loosely secure with an M10 flange nut on each side of the vehicle.



Figure 17

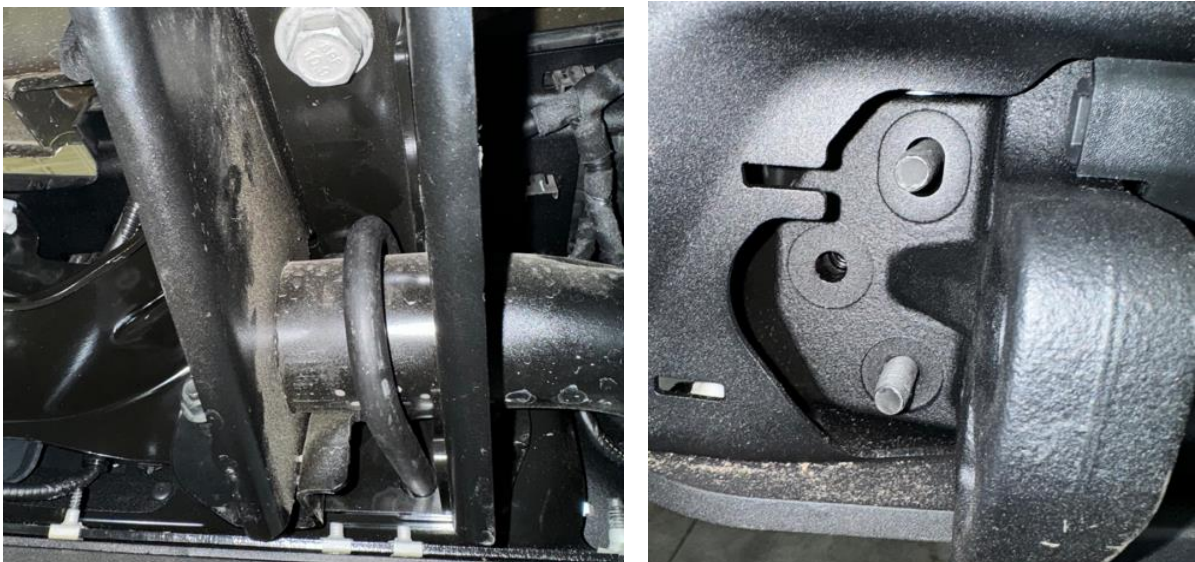


15. Reusing the factory M14 bolts removed in Step 3, secure the AEV bumper to the top of the hitch frame by aligning the support bracket hole on the bumper to the frame hole you previously removed the M14 bolt from. (2 bolts – 1 per side). Torque both the M14 and M10 flange nuts to spec once all bolts are loose installed.



*Figure 18*

16. Install the supplied M12 U-Bolts around hitch tube as pictured.



*Figure 19*





17. Thread M12 flange nuts onto U-Bolt and loosely secure. Install the M10 flange bolt through the remaining tow hook hole into the weld nut on the backside of the hitch bracket. Torque the M10 bolt to spec found in step 15. Next, torque the U-bolt to **70 Nm**.



Figure 20

18. Refer back to Step 1 and reconnect all previously disconnected wiring harnesses, making sure to resecure any loose wiring with zip-ties.

19. Torque all fasteners to specifications on the table below.

Bolt Size	Torque Specification
M4.2	2.5 NM / 1.8 lb-ft
M6	10.5 NM / 7.7 lb-ft
M8	25 NM / 18.4 lb-ft
M10	67 NM / 50 lb-ft
M12	115 NM / 85 lb-ft
M14	185 NM / 136 lb-ft

Table 1



20. Insert spare tire tube back into the support bracket of the bumper.



*Figure 21*

21. Install the plastic covers on the inboard side of the tow hooks.

- i. Align locating slots as shown below and firmly press to seat the retaining clips.



*Figure 22*



22. Insert the M4.2x1.41.x35 (T15) Torx head screw into the hole on the underside of the bumper. (2 total, 1 per side).

23. AEV Rear Bumper installation complete.



*Figure 23*