



Exhaust Skid Plate

FOR Chevy/GMC SRW Heavy Duty Trucks
2020 – Current

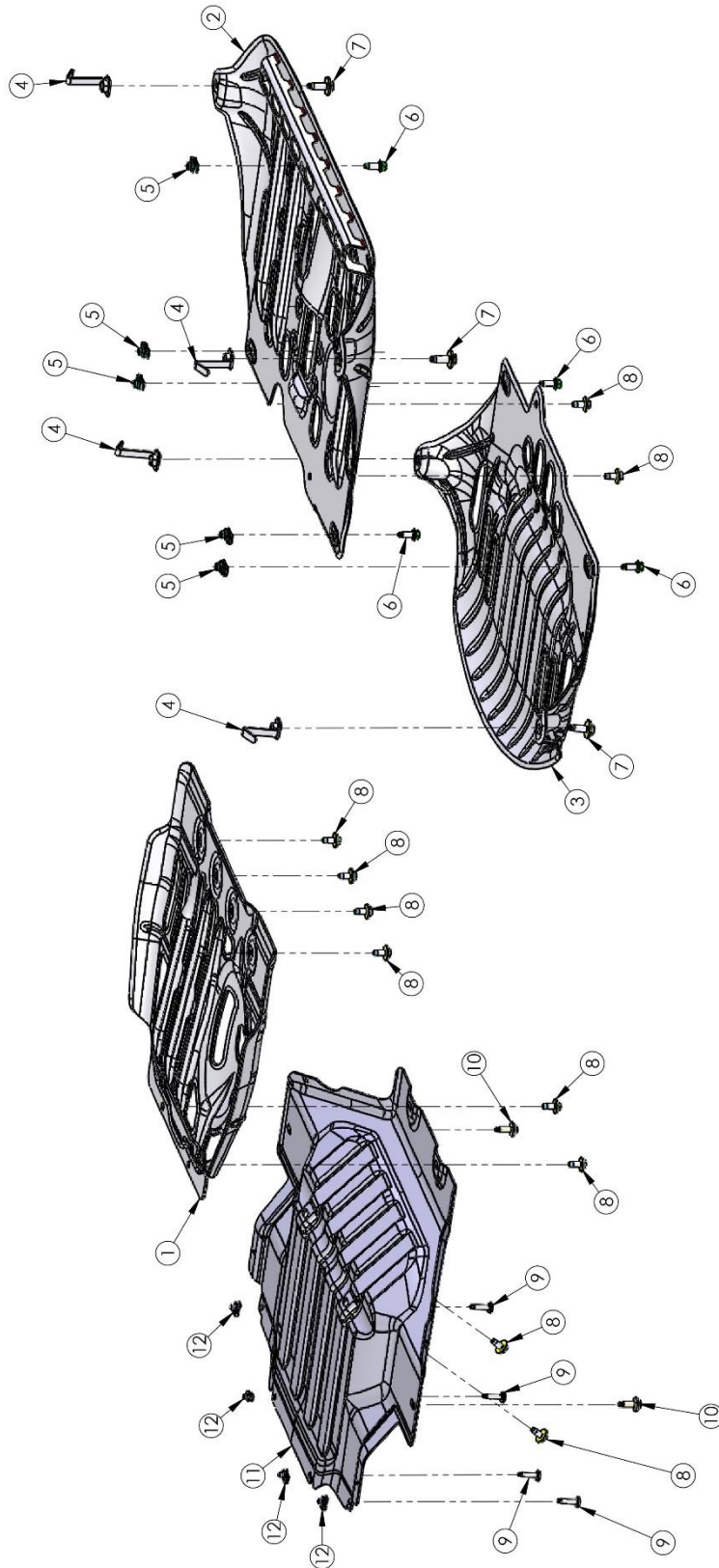
INSTALLATIONGUIDE



INCLUDED PARTS	QTY	REQUIRED TOOLS
Exhaust Skid Plate	1	Ratchet
M12 Flag Nut	2	Torque Wrench
Hardware Pack	1	15MM Socket, 18 MM Socket
		Jack stand

PLEASE READ BEFORE YOU START

To guarantee a quality installation, we recommend reading these instructions thoroughly before beginning any work. These instructions assume a certain amount of mechanical ability and are not written nor intended for someone not familiar with auto repair.





ITEM NO.	SW SERIAL #	PART #	DESCRIPTION	QTY.
1	D035220	ATHP1200AA	IFS SKID, STAMPING, T1 HD SKID PLATES	1
2	D035308	ATHP0140AB	T-CASE SKID, WELDMENT, T1 HD SKID PLATES	1
3	D035225	ATHP1300AB	EXHAUST SKID, STAMPING, T1 HD SKID PLATES	1
4	D035346	ATHP0150AC	WELDMENT, T1 HD SKID PLATES, M12 FLAG NUT	4
5	D006996	11548589	M10 X 1.5 U-NUT (PANEL THICKNESS RANGE 1.5-5.5)	5
6	D006578	11588738	M10 X 1.5 X 25 HEX FLANGE BOLT	5
7	D036185	11519537	M12 X 1.75 X 35 HEX SCREW AND WASHER ASM	4
8	D036184	11517817	M10 x 1.5 x 25 HEX SCREW AND WASHER ASM	10
9	D039291	AEV91179AA	(87843052) BOLT, FHCS, M8 X 1.25 X 37	4
10	D040432	11569600	M10 X 1.5 X 25 HEX BOLT AND WASHER ASM	2
11	D038669	ATHP1100AB	RADIATOR SKID, STAMPING, T1 HD SKID PLATES	1
12	M8 X 1.25 U-NUT	11548587	M8 X 1.25 U-NUT	4



I. VEHICLE PREPARATION

1. Ensure Vehicle Jacks are free of AEV Exhaust Skid mounting holes.

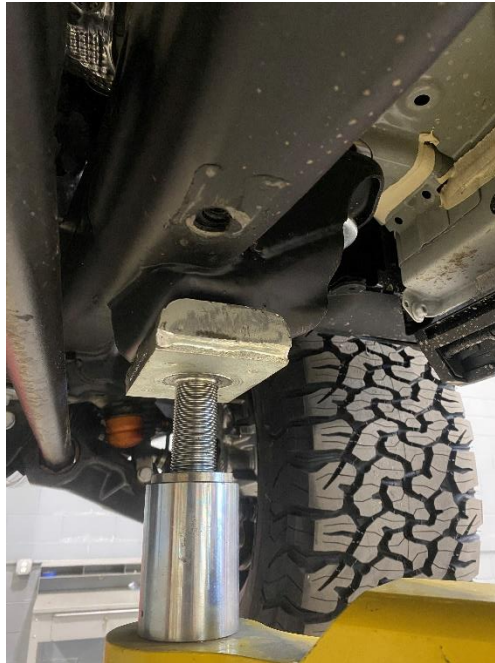


Figure 1

2. Remove factory Exhaust Skid Plate and transfer skid plate (if applicable). Install AEV Transfer Case Skid Plate (If purchased).
3. AEV Skid Plate Installation order if installing multiple skid plates:
 - A. AEV Front IFS Skid Plate, then AEV Radiator Skid Plate (Radiator Skid requires AEV front bumper).
 - B. AEV Transfer Case Skid Plate, then Exhaust Skid Plate.
 - i 2019-2022 models may require drilling frame mounting points for both the Transfer Case Skid Plate and the Exhaust Skid Plate.
 - ii Dually truck variants of the Heavy-Duty truck will not support these skid plates.

4. Free Align AEV Exhaust Skid Plate to frame mounting points for U Nuts and Flag Nut locations.
 - A. Please reference Figure 3 for marking areas for drilling if the truck does not have frame mounting locations.
 - B. Install 2 M12 Flag Nuts



Figure 2



- C. Install 2 M10 U nuts (or rivnuts if drilling) on cross car frame support near the rear of the vehicle.
 - i If the vehicle does not have these mounting locations, make sure the marked points are close enough to either end to fit the U nut through the frame.

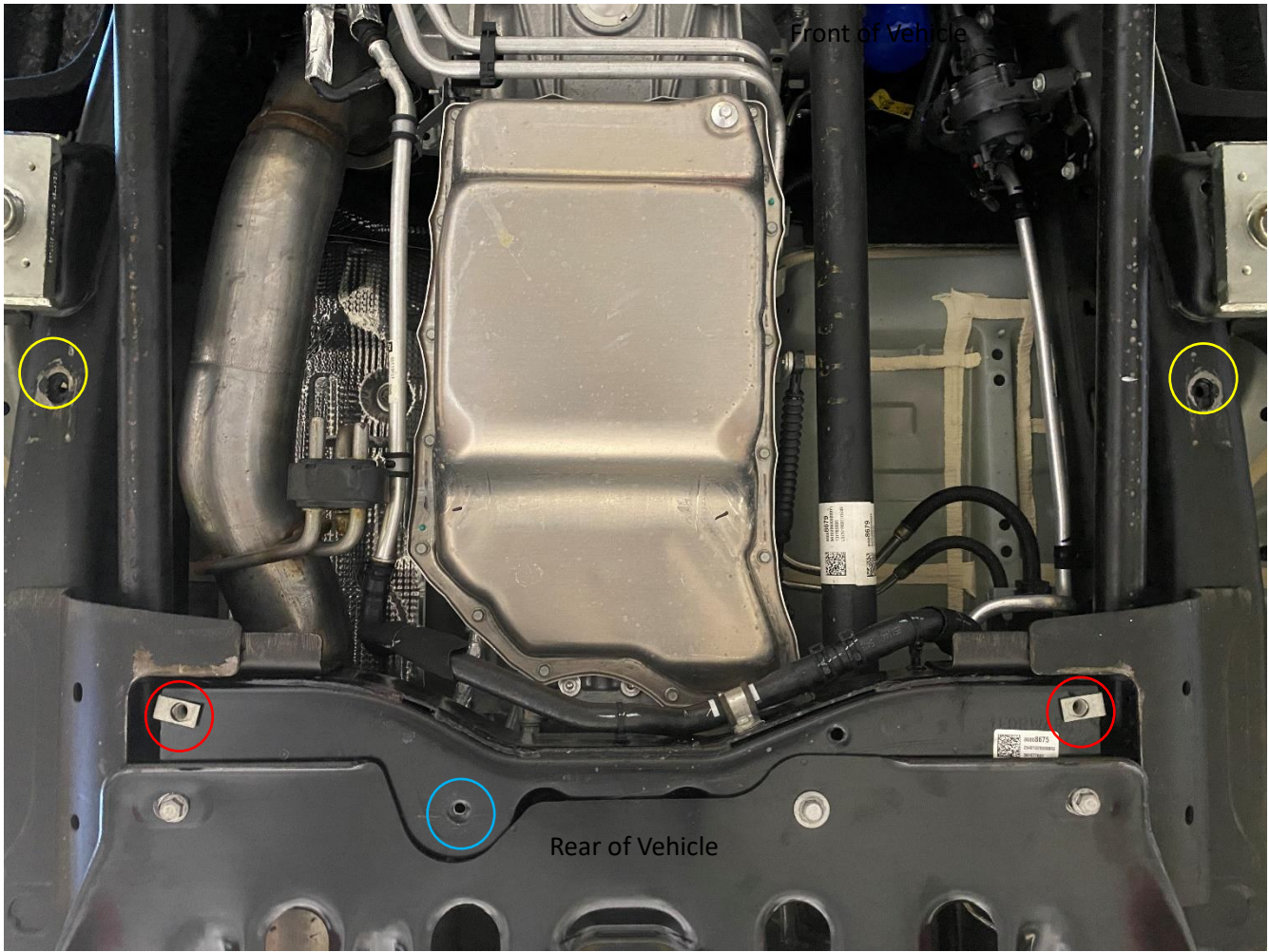


Figure 3

5. Align Skid plate utilizing a jack stand and loosely tighten bolts in order below.
 - A. M12 Bolts with Flag Nuts.
 - B. Front 3 M10 bolts.
 - i 25MM (shorter self-tapping) bolt installed in the center.

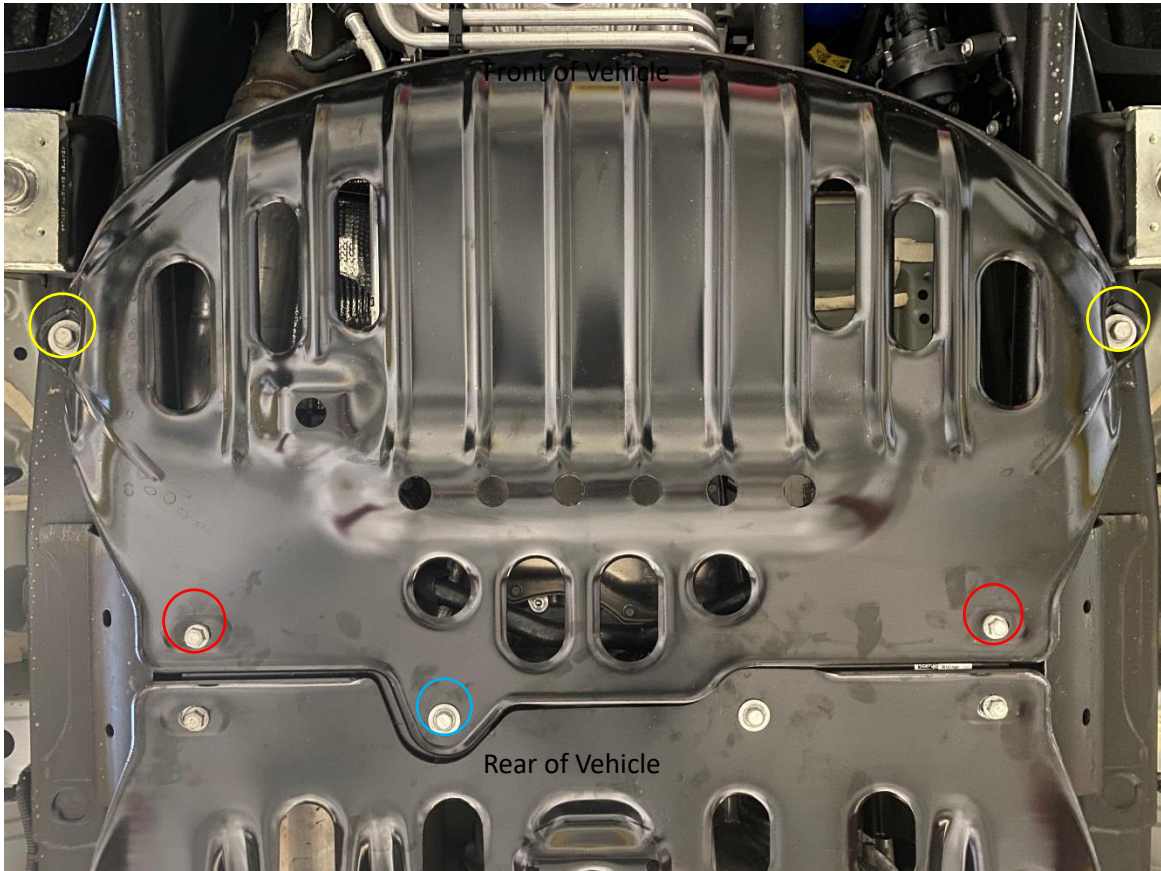


Figure 4

6. Torque Bolts to the following FT/LBS
 - A. M10 42 FT/LBS
 - B. M12 74 FT/LBS