



Radiator Skid Plate

FOR Chevy/GMC Heavy Duty Trucks
2024 – Current

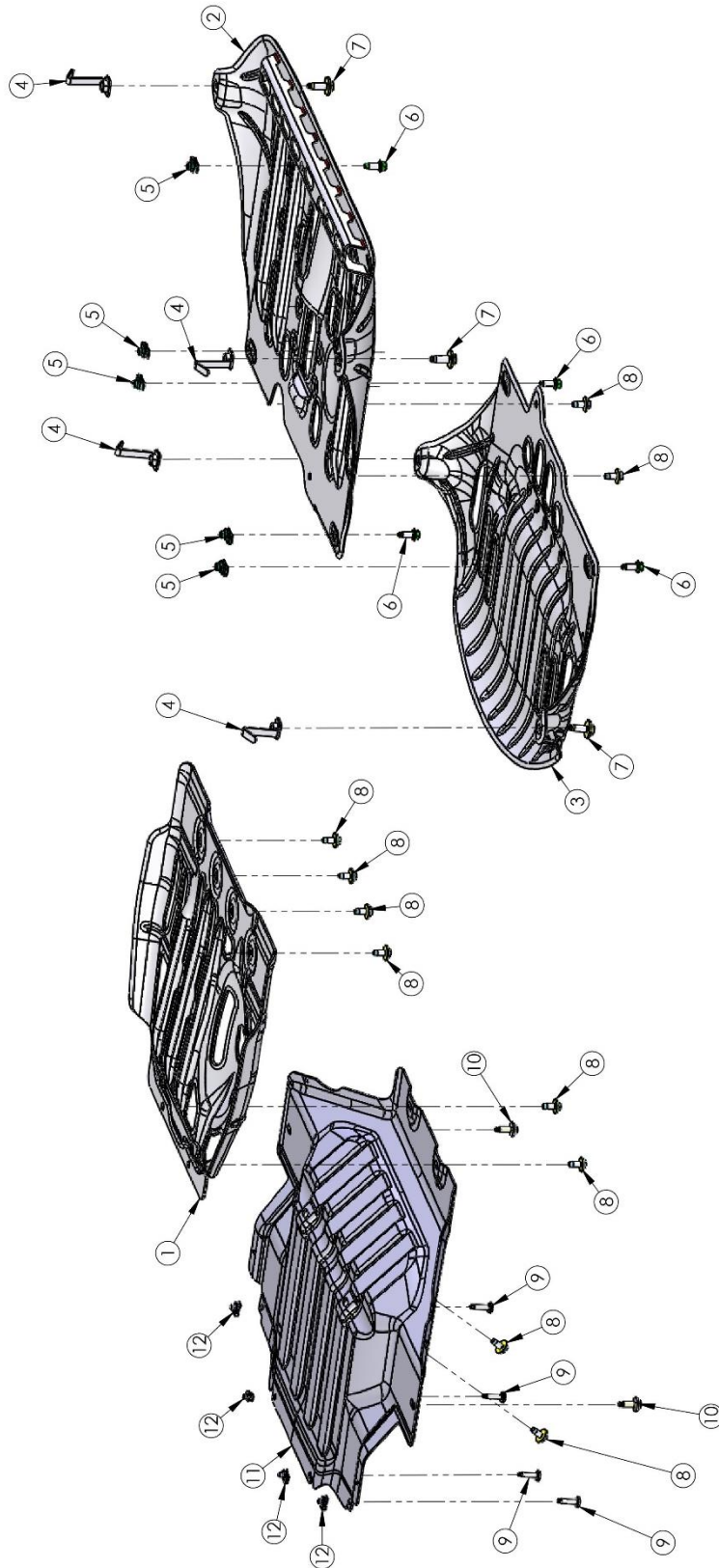
INSTALLATIONGUIDE



INCLUDED PARTS	QTY	REQUIRED TOOLS
Radiator Skid Plate	1	Ratchet
Hardware Pack	1	Torque Wrench 15MM Socket, T40 Socket, T15 Socket Jack stand

PLEASE READ BEFORE YOU START

To guarantee a quality installation, we recommend reading these instructions thoroughly before beginning any work. These instructions assume a certain amount of mechanical ability and are not written nor intended for someone not familiar with auto repair.





ITEM NO.	SW SERIAL #	PART #	DESCRIPTION	QTY.
1	D035220	ATHP1200AA	IFS SKID, STAMPING, T1 HD SKID PLATES	1
2	D035308	ATHP0140AB	T-CASE SKID, WELDMENT, T1 HD SKID PLATES	1
3	D035225	ATHP1300AB	EXHAUST SKID, STAMPING, T1 HD SKID PLATES	1
4	D035346	ATHP0150AC	WELDMENT, T1 HD SKID PLATES, M12 FLAG NUT	4
5	D006996	11548589	M10 X 1.5 U-NUT (PANEL THICKNESS RANGE 1.5-5.5)	5
6	D006578	11588738	M10 X 1.5 X 25 HEX FLANGE BOLT	5
7	D036185	11519537	M12 X 1.75 X 35 HEX SCREW AND WASHER ASM	4
8	D036184	11517817	M10 x 1.5 x 25 HEX SCREW AND WASHER ASM	10
9	D039291	AEV91179AA	(87843052) BOLT, FHCS, M8 X 1.25 X 37	4
10	D040432	11569600	M10 X 1.5 X 25 HEX BOLT AND WASHER ASM	2
11	D038669	ATHP1100AB	RADIATOR SKID, STAMPING, T1 HD SKID PLATES	1
12	M8 X 1.25 U-NUT	11548587	M8 X 1.25 U-NUT	4



I. VEHICLE PREPARATION

1. Remove factory radiator skid Front Bumper, and Wheel Liner Close outs.
2. Install AEV Front Bumper (required for Radiator Skid Plate) and IFS Skid Plate (if purchased). Reinstall factory Wheel Liner Close outs.
3. AEV Skid Plate Installation order if installing multiple skid plates:
 - A. AEV Front IFS Skid Plate, then AEV Radiator Skid Plate (Radiator Skid requires AEV front bumper).
 - B. AEV Transfer Case Skid Plate, then Exhaust Skid Plate.
 - i 2019-2022 models may require drilling frame mounting points for both the Transfer Case Skid Plate and the Exhaust Skid Plate.
 - ii DRW (Dually) truck variants of the Heavy-Duty truck will not support these skid plates.
4. Install 4 M8 U-Nuts on the front of the AEV Radiator Skid



Figure 1

5. Ensure 4 M6 U-Nuts are installed to Wheel Liner Close Outs.
6. Free Align Skid Plate to ensure that the 2 rear mounting points and 5 center mounting points have rivnuts/tapped holes.

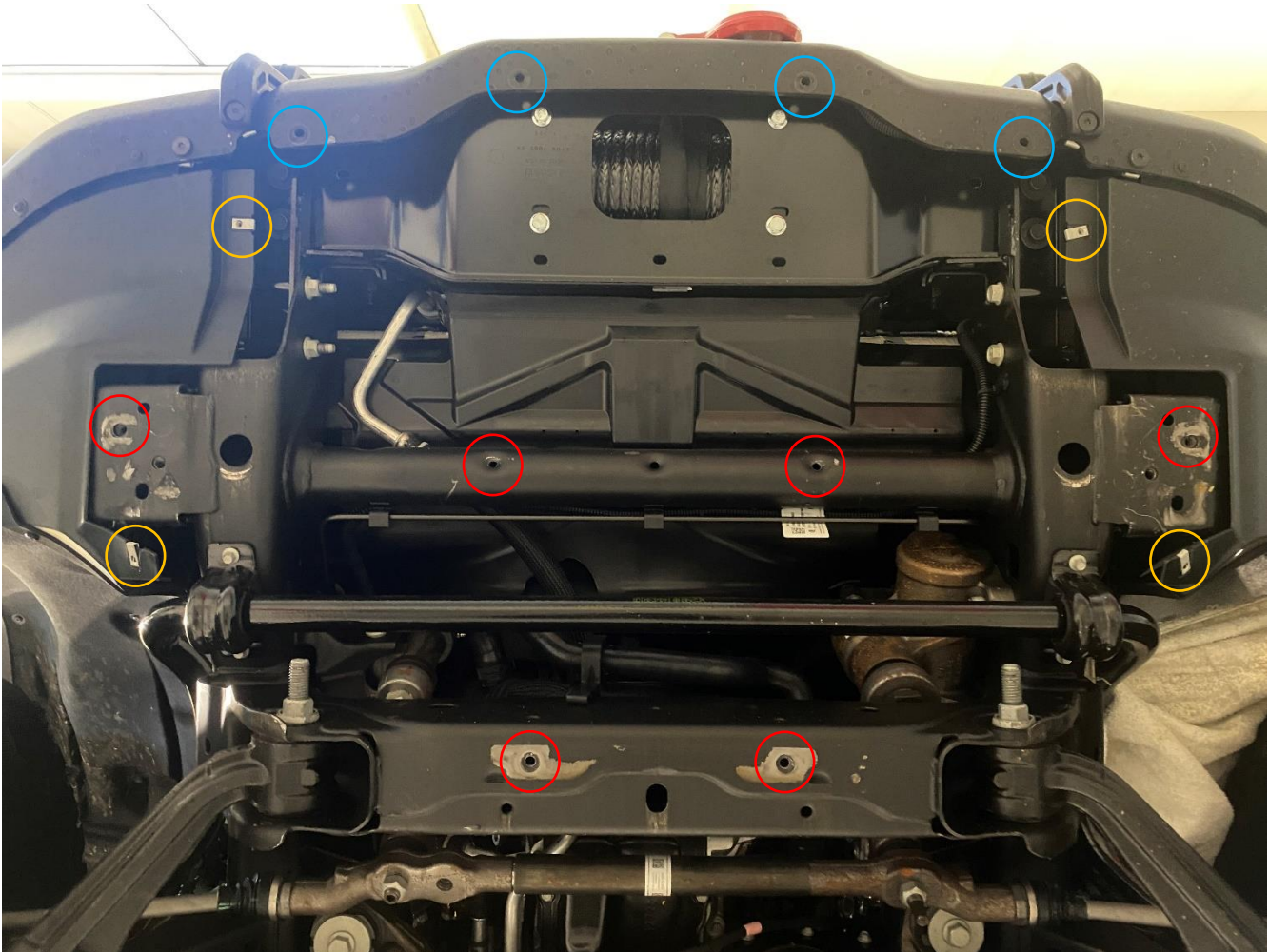


Figure 2

7. Align Skid Plate utilizing a jack stand for installation. Ensure that the Radiator skid plate is resting within the bottom lip of the front bumper, while encapsulating the wheel liner close outs.

8. Loosely tighten Bolts in the following order for safest installation:
 - A. Two rear 30mm M10 bolts (B-11588738)
 - B. 4 M8 Front Bumper Bolts
 - C. 4 Center M10 25 MM Bolts
 - D. 4 M4.2 Bolts

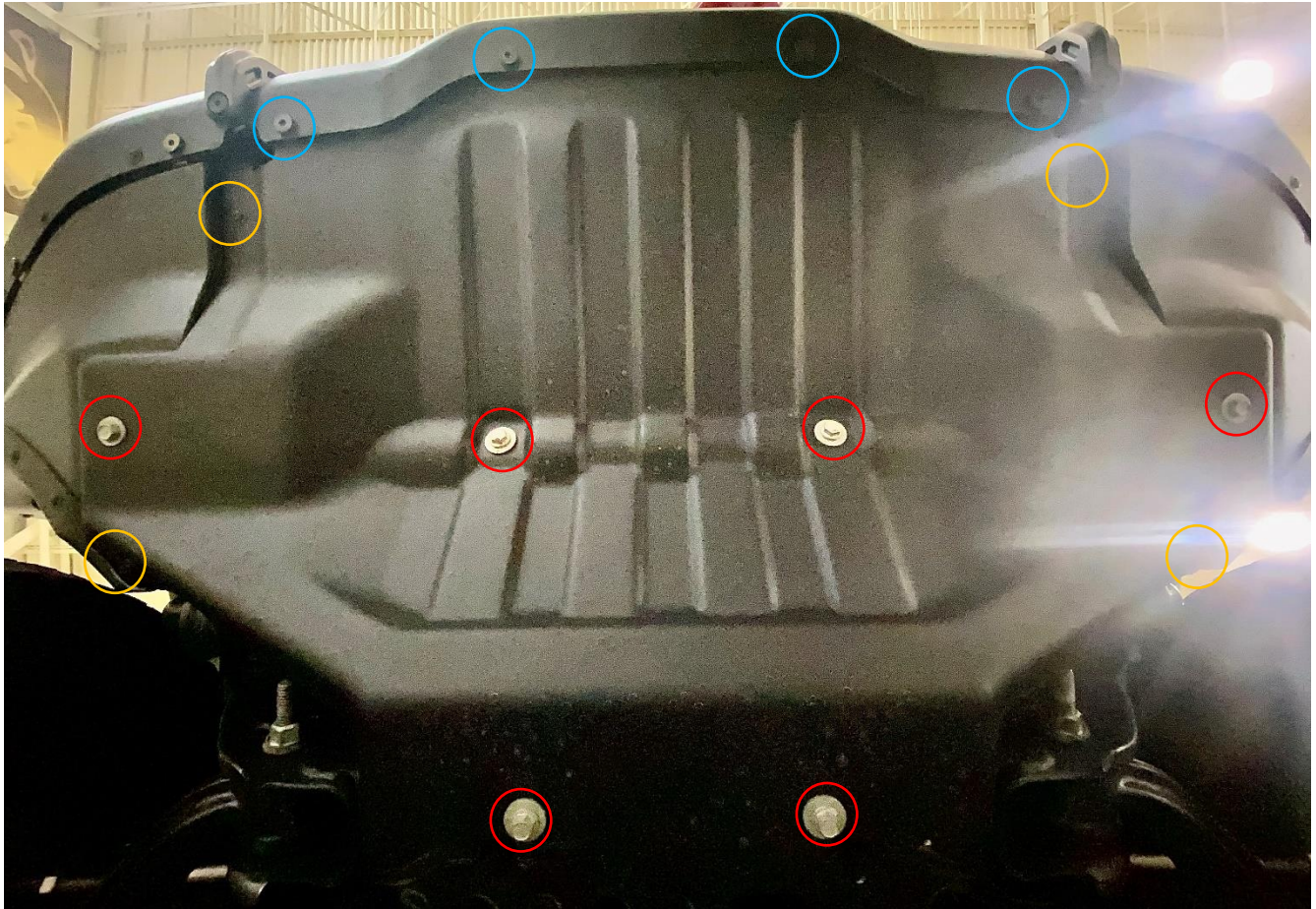


Figure 3

9. Torque Bolts to the following FT/LBS
 - A. M8 16 FT/LBS
 - B. M10 42 FT/LBS
 - C. M4.2 2 FT/LBS