



COME UP WINCH KIT

FOR AEV RAM FRONT BUMPER

PLEASE READ ENTIRELY BEFORE YOU START

To guarantee a quality installation, we recommend reading these instructions thoroughly before beginning any work. These instructions assume a certain amount of mechanical ability and are not written nor intended for someone not familiar with auto repair.

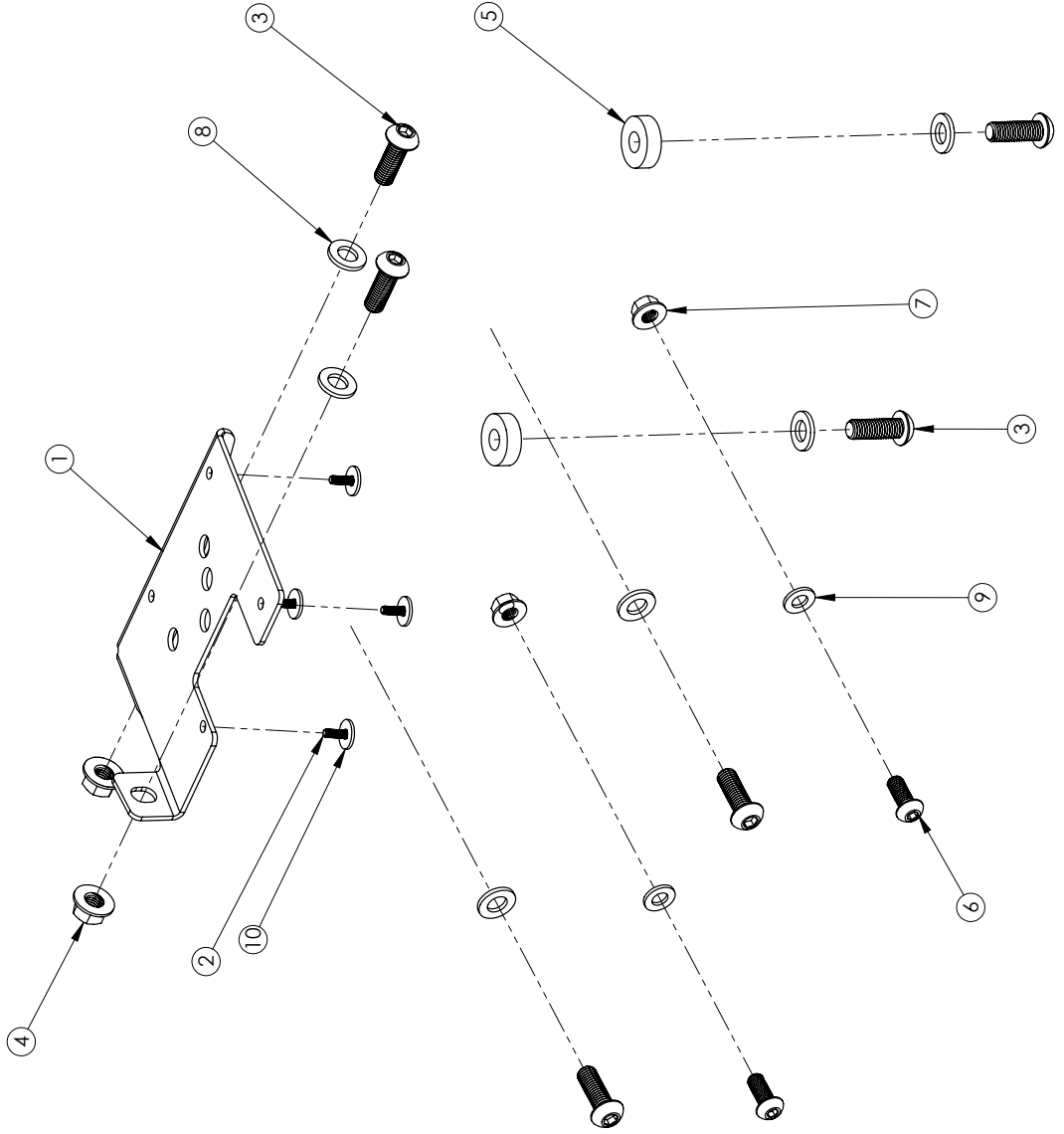
PLEASE NOTE: If you are installing the AEV Front Camera Relocation Kit, you must do so before installing a winch.



COME UP WINCH KIT

FOR AEV RAM FRONT BUMPER

ITEM NO.	PartNo	DESCRIPTION	QTY.
1	ARMB1234AB	BRACKET, RAM HD 2019, COMEUP SOLENOID	1
2	AEV91194AA	M5 X 0.8 X 16, BOLT	4
3	AEV91001AB	M12 X 1.75 X 35	6
4	AEV93001AB	M12 X 1.75 NON LOCKING FLANGE NUT	2
5	AEV98011AA	SPACER, STEERING DAMPER, 1.25"OD X .500"ID X .39"	2
6	AEV91149AA	M10 X 1.5 X 25	2
7	AEV93036AA	M10 X 1.5 FLANGE NUT, NON LOCKING	2
8	AEV98004AC	M12 FLAT WASHER	6
9	AEV98006AA	M10 FLAT WASHER	2
10	AEV98027AA	M6 FLAT WASHER 18MM OD	4





1. If your bumper is missing the two hole locations bolded below (top LH and RH) in Figure 1 use the template on the final page to drill out the two 1/2" holes that are needed for installation.

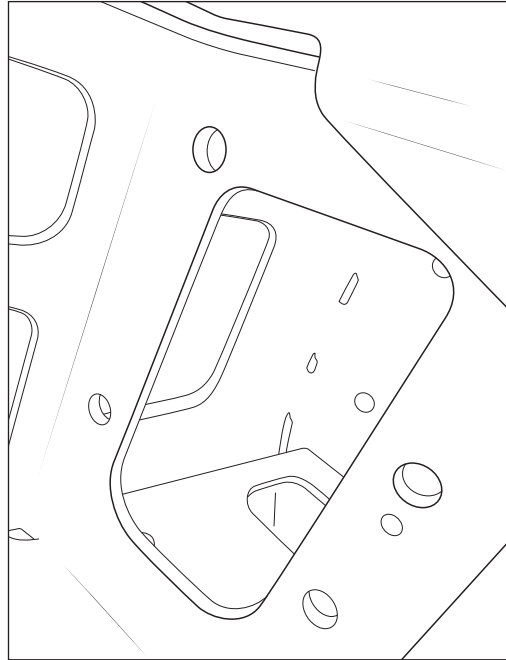


Figure 1

2. Open the four lower holes on the bottom of the bumper to 5/8" that will later be used to fasten the winch.
3. The winch motor needs to be rotated 90 degrees to the left when the electric nodes are facing you.
 - A. Loosen the m10 bolts on the cap. Loosen the fit of the tube.
 - B. Use a razor blade to help break the seal between winch and motor. **Be careful to not pull the motor too far as magnets will come out.**
 - C. Remove the pin connecting the motor cover and the winch kit.

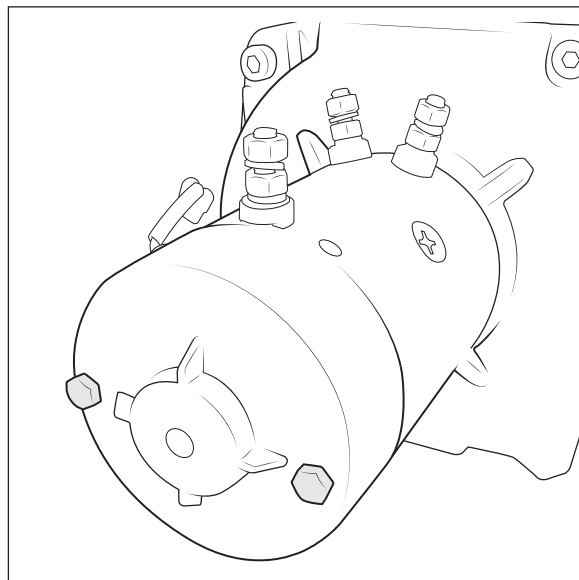


figure 2



4. Remove the original housing bracket from the power box by removing the four interior screws.
5. Mount the AEV housing bracket in its place, making sure to keep the part flat as to not shake the interior nuts out of place, screw in the AEV provided screws and washers to mount the AEV bracket onto the power box (fig. 3).

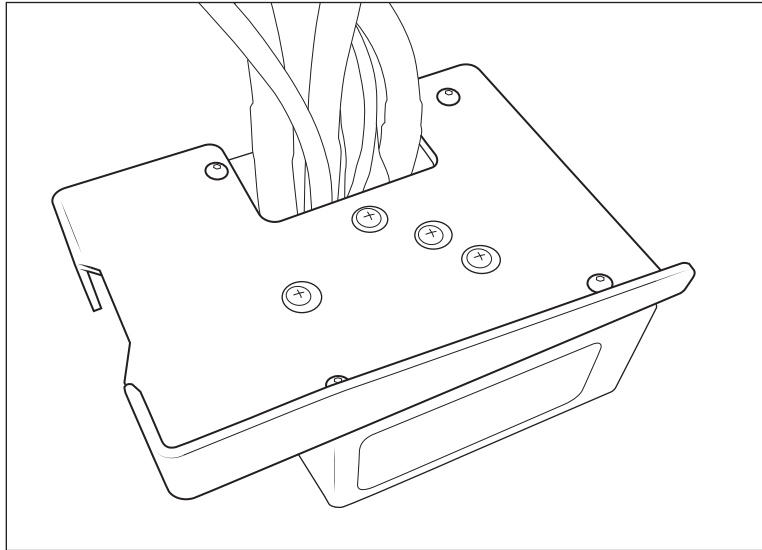


Figure 3

6. Attach the cables to the color coordinated nodes.
 - A. Yellow and blue angled down and to the right
 - B. White going straight down
 - C. Ground wire to ground
7. Feed the winch cord through the face of the stamping (fig. 4).

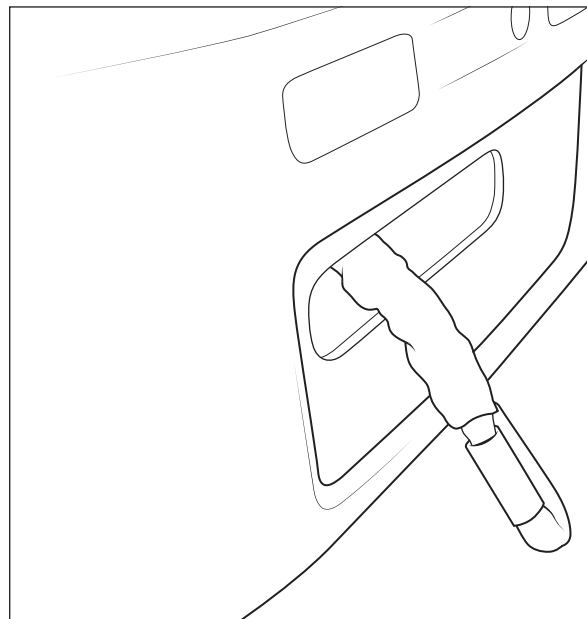


Figure 4



8. Move the winch into the designated slot of the stamping and insert the screws into the designated locations. Insert the M12 screws at the top (fig. 5 left) and working your way to the bottom. Leave the front a little loose to tighten after the bottom M10 screws (fig. 5 right).

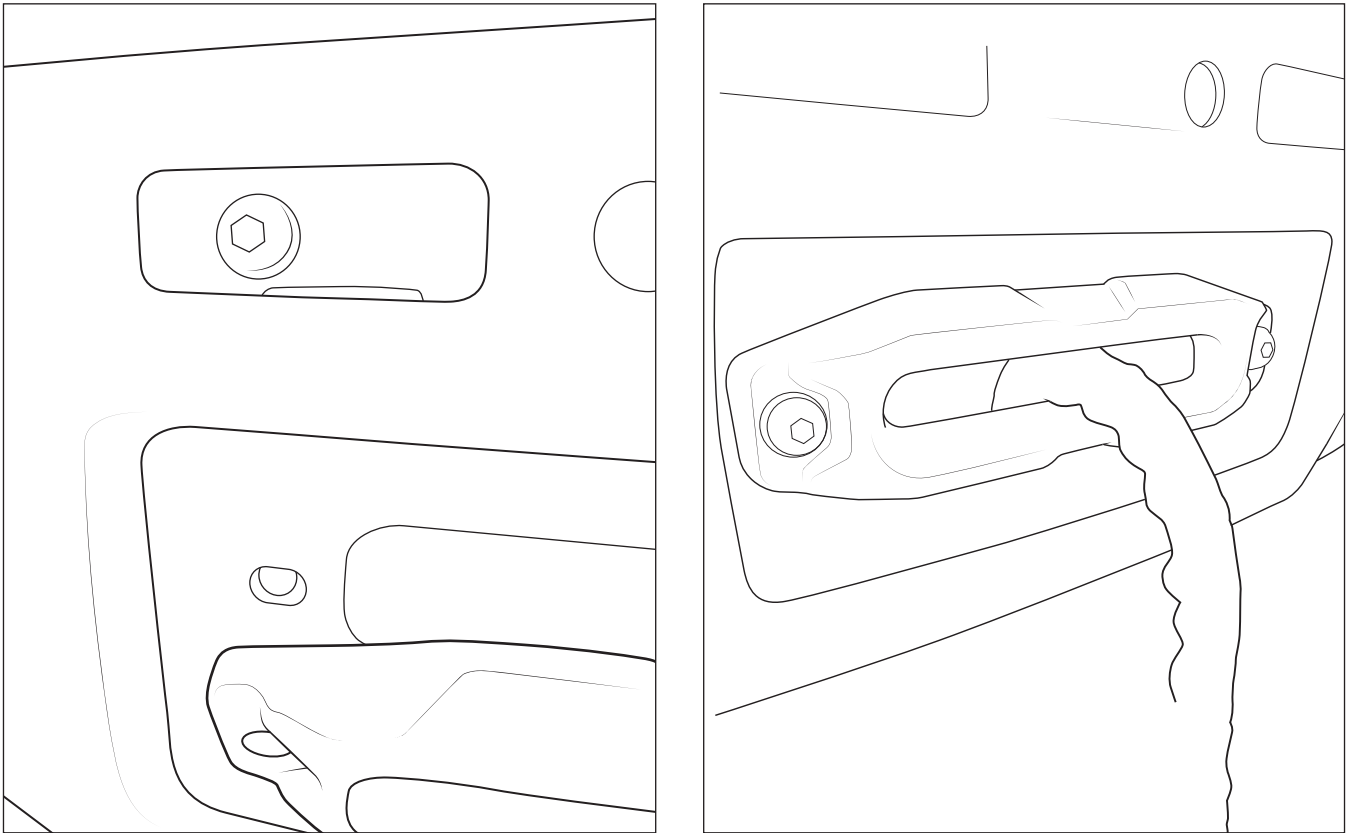


Figure 5

9. For the bottom M12 screws the thicker washer needs to be inserted between the winch and the stamping - you will need to pry the winch up a little bit to correctly fit them into the right spots (fig. 6).



Figure 6



10. Screw in the power block component use a pry bar to ensure that the cords are not being restricted by the AEV bracket (fig. 7).

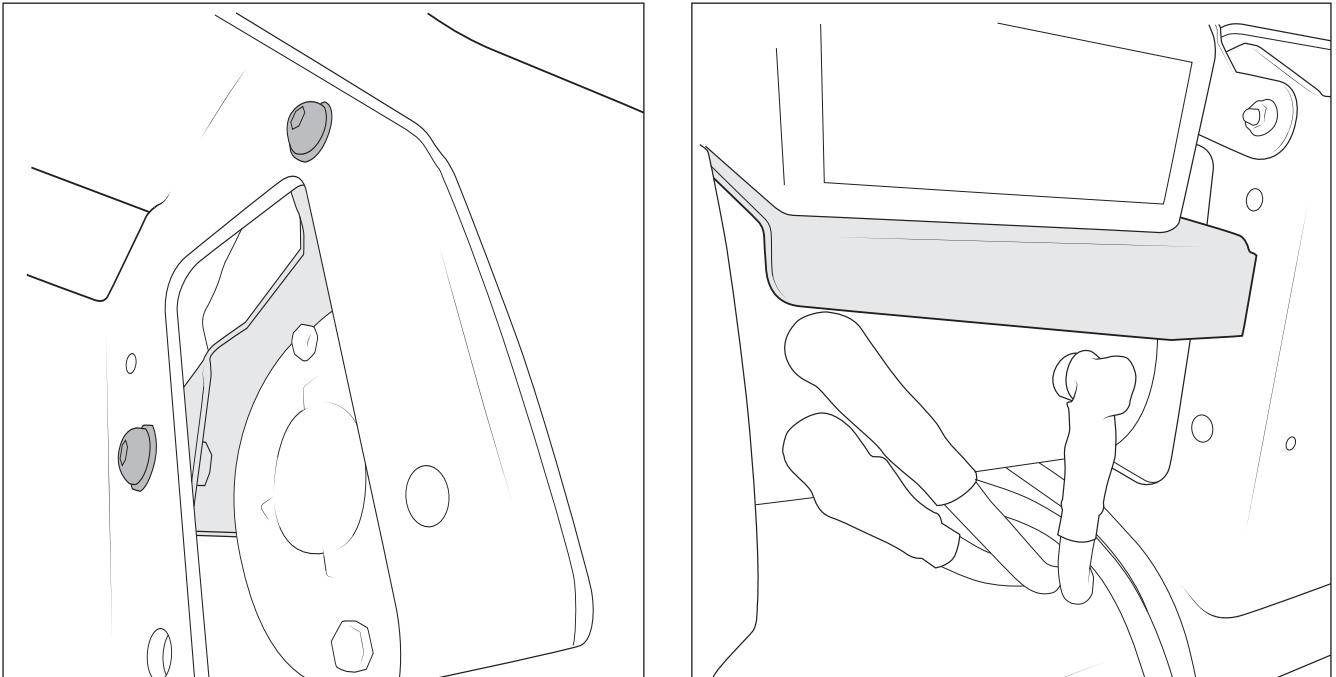
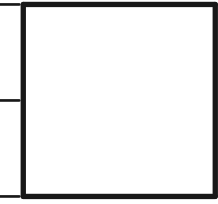


Figure 7

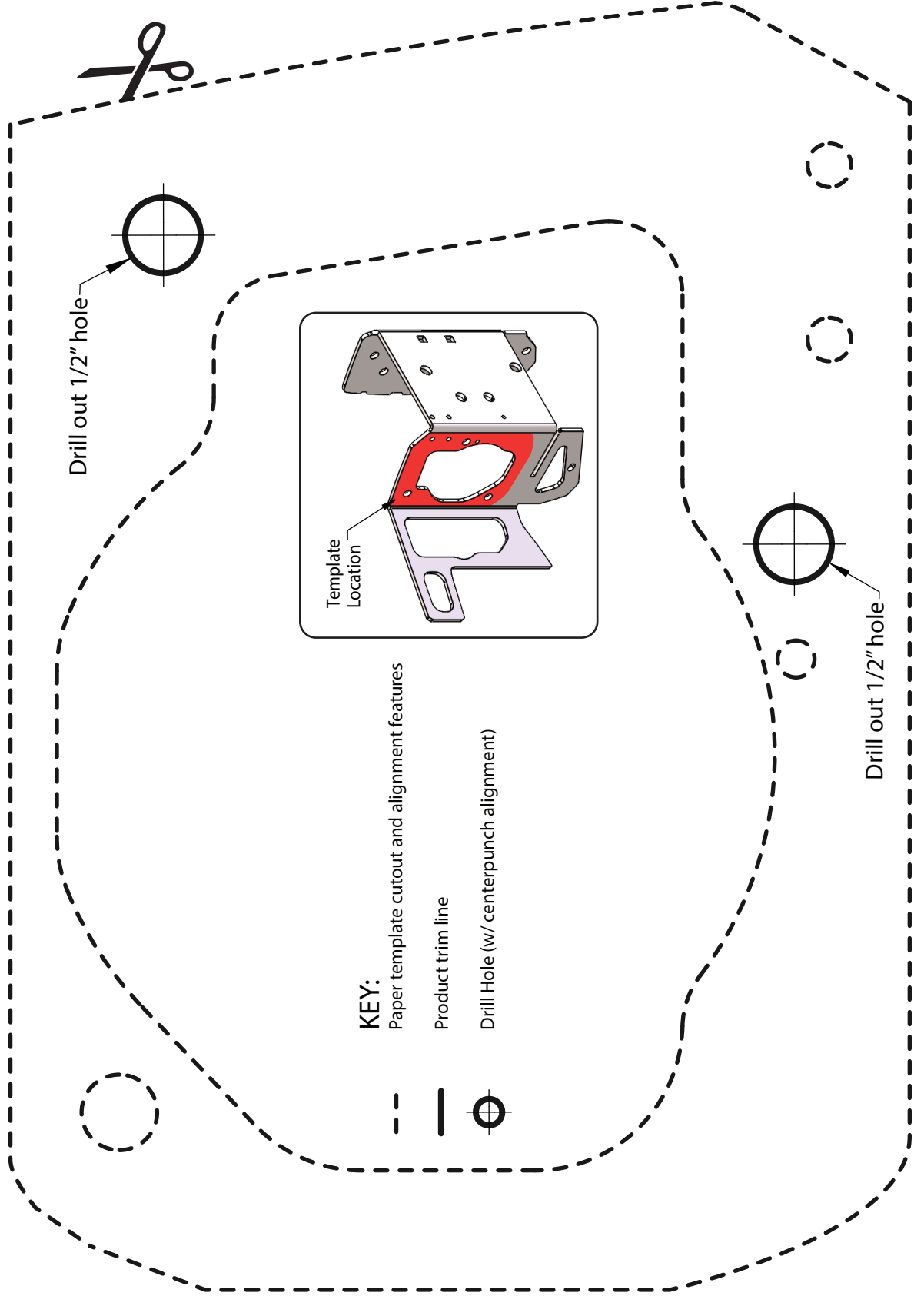
0 1/2" 1"



RAM HD FRONT BUMPER, COMEUP WINCH TEMPLATE

AEV30466AB

1" Square for Scale



Drill out 1/2" hole

Drill out 1/2" hole

- KEY:**
- - - Paper template cutout and alignment features
 - Product trim line
 - ⊕ Drill Hole (w/ centerpunch alignment)

Template Location