



REAR HATCH LIGHT

FOR JL WRANGLER

KIT: 38060006AB

PLEASE READ BEFORE YOU START

To guarantee a quality installation, we recommend reading these instructions thoroughly before beginning any work. These instructions assume a certain amount of mechanical ability and are not written nor intended for someone not familiar with auto repair.

INCLUDED PARTS	QTY	REQUIRED TOOLS
30301088AA Harness, Hardtop Harness, Interior Light (Identifiable by the purple wire)	1	Drill, Trim Tool
30301089AA Harnes, Liftgate Section, Interior Light (Identifiable by the two black plugs)	1	T40-Torx Bit or Driver
30301090AA Harness, Power Harness, Interior Light (Identifiable by the white white power outlet connector)	1	T15-Torx Bit or Driver 3mm Allen Wrench or Driver
30301091AA, Baja Light with connector, Interior Light	1	7mm Socket ¼" Drill Bit
AEV93027AA Nut, M6-1 Free Spinning Flange Nut	1	3/16" Drill Bit
AEV91068AB M6X1.0X16MM Button Head Cap Screw	1	¾" Drill Bit
AEV98027AA Washer, M6x18-PS5873B	1	

1. Remove the trunk floor cover and the driver's side floor runner using the trim tool to expose the fasteners beneath the plastic covers shown in (Fig 2) then using a T40 torx head driver unscrew the three bolts that mount the floor runner, then remove the runner.



Figures 1 (left), 2 (middle), and 3 (right)

2. Detach the hard top harness and the washer hose, then if the insulation pads are equipped remove them to access and remove the shown plastic covers.

Note: Only the cover on the driver's side needs to be removed (Fig 6).



Figures 4 (top), 5 (bottom left), 6 (bottom right)

3. Remove the plastic floor compartment using the pull tab (*Fig 7*) to then access and remove the plastic side panel on the driver's side that covers the roll bar using the trim tool (*Figs 8 – 15*).



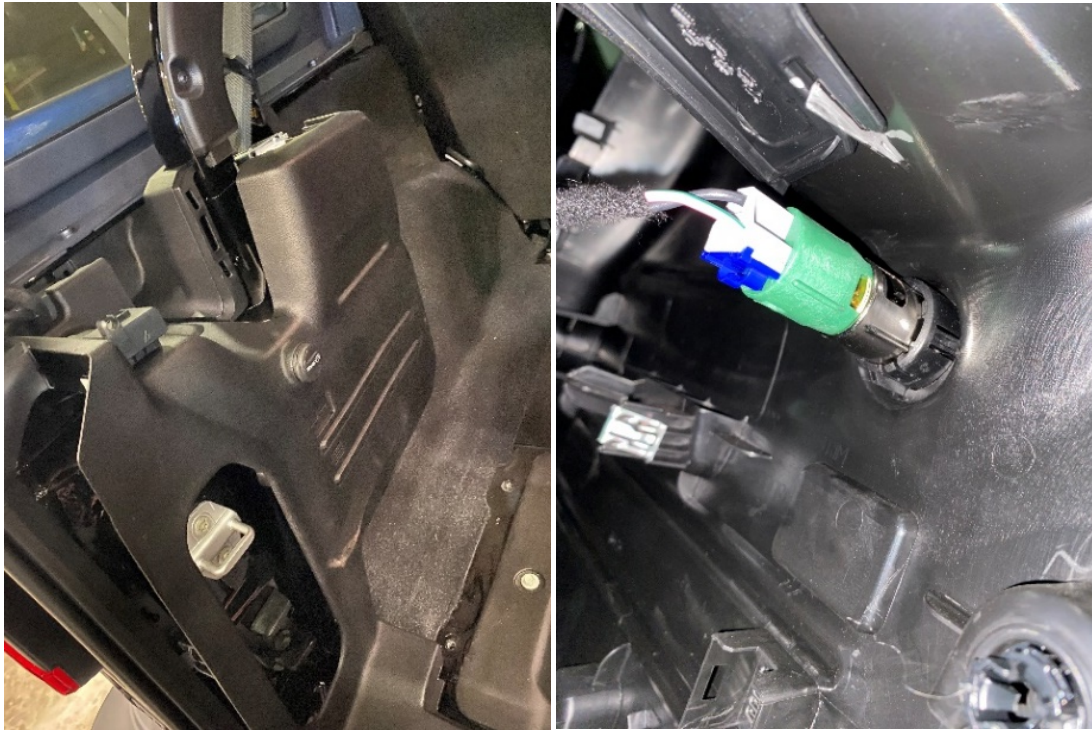
Figures 7 (left), 8 (middle), and 9 (right)

Note: For MY2024+ Remove the electrical connector cover before removing the side panel (*Fig 10*). Start with the plastic covering around the seat belt.



Figures 10 (left) and 11 (right)

Note: Make sure not to remove the large plastic cover before the aux plug is unattached from the socket (*Fig 14*). Be sure to also remove the back cover to allow access to the harness that resides below the interior.



Figures 13 (top left), 14 (top right), and 15 (bottom)

4. Remove the wiper motor cover using a T15 torx head driver.



Figures 16 (left) and 17 (right)

5. Remove the two wire-track covers that encase the wiring track (Fig 18) to the liftgate glass, using a trim tool to disengage the tabs that run along both sides.



Figures 18 (left) and 19 (right)

- Carefully remove the rear defrost connector on the driver's side of the glass as the solder to the glass is delicate. Then remove the tape surrounding the wire harness and disconnect the factory harness

Note: Slowly twist back and forth and pull for removal.



Figure 20 (left) and 21 (right)

- Starting with the terminal ends, feed AEV30301088AA through the braided harness sleeve and all the way through the plastic cover that belongs to the hardtop (circled in Fig 24).



Figures 22 (left), 23 (center), and 24 (right)

8. Mount the connector plug onto the windshield wiper motor using a zip-tie.



Figures 25

9. Run the wire (AEV30301088AA) along the wiring track with the factory harness, using the same attachment points.



Figure 26

10. Retape the braided harness sleeve and reattach the rear defrost connector.



Figure 27

11. Attach the provided plug circled in (Fig 29) below to end of (AEV30301088AA). **When attaching be sure align the purple wire to the hole closest to the red push tab and the black wire to the other.** When installing the wires there will be an audible click when fully installed. Engage the white TPA lock after terminals are seated.

Note: **Be sure to install the terminal in the correct position. If improperly installed a special tool is required to unpin the terminal.**

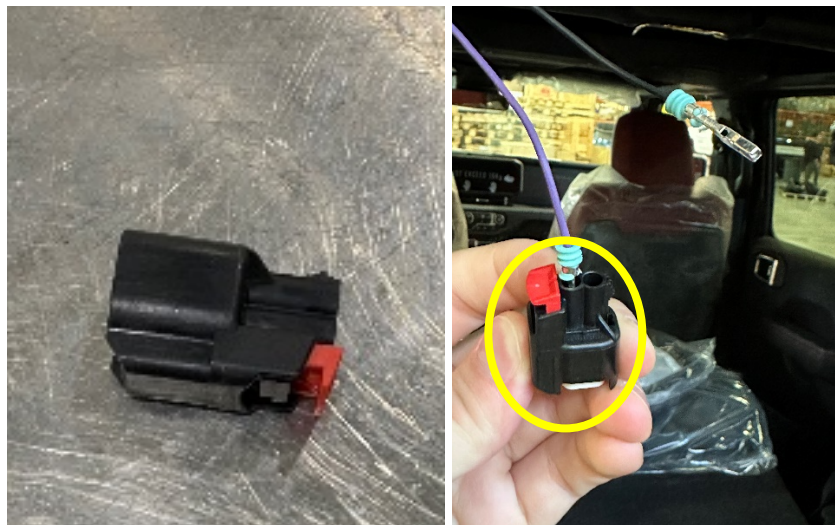


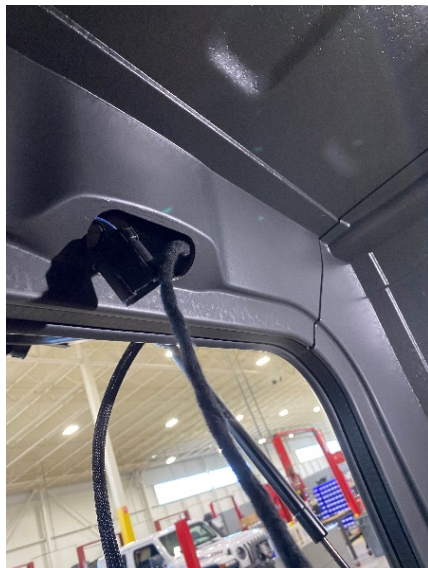
Figure 28 (left) and 29 (right)

12. Starting at the wiper motor reinstall the wiring track cover.



Figure 30

13. Attach AEV30301089AA (Fig 31) to the the newly mounted harness (AEV30301088AA) and feed them through the hole in the hard top (same as hole as Fig 5) down along the driver side and out the hard top harness connector hole (Fig 32). Reattach the hard top harness and reinstall the top plastic cover (Figs 33 and 34).



Figures 31 (left), 32 (middle), and 33 (right)



Figure 34

14. From the plastic cover left of the lift gate remove both the hardtop harness and the wiper hose to allow for the addition of the new wire connector.

Note: Push on the Christmas tree attachment point from the back to remove the wiper hose and use a pin to unhook the retaining feature of the harness plug.

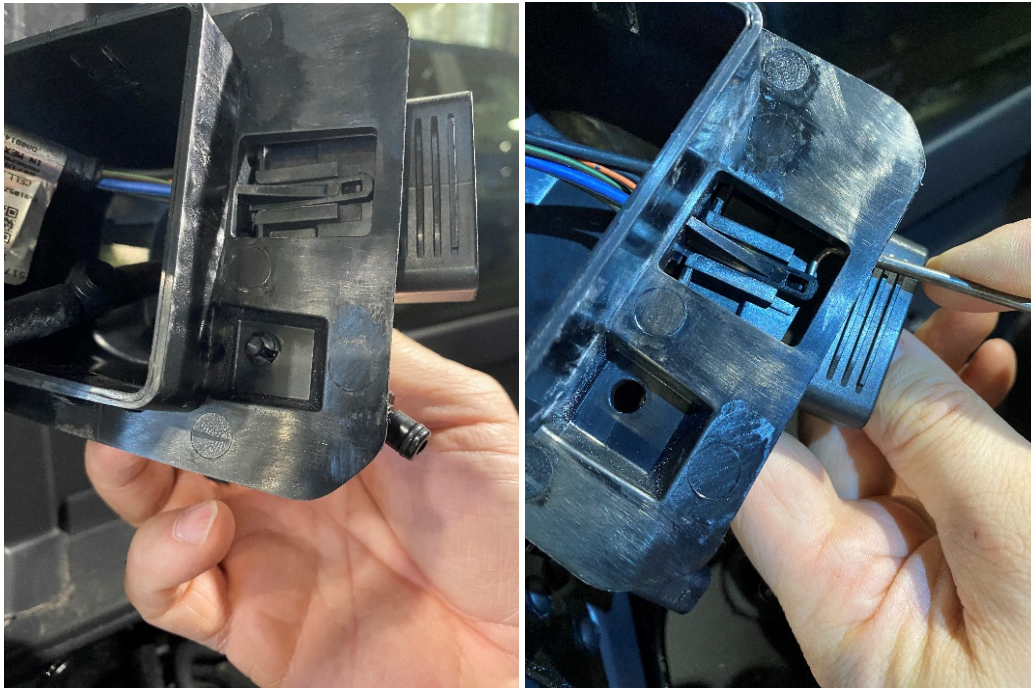


Figure 35 (left) and 36 (right)

15. Zip-tie the washer hose and the new connector together then fit the three plugs back into the bezel, starting with the washer hose and new harness. Feed the excess wire into the hard top and reinstall the plastic cover over the exposed wiring.



Figures 34 (left) and 35 (right)

16. Remove fuse cover (*Fig 36*) from AEV30301090AA and keep it to the side. Using the below T-junction as reference points route AEV30301090AA and zip tie the harness in the circled locations for best fitment. Use (*Figs 36 – 40*) for reference.



Figure 36

Note: AEV30301090AA marked with yellow in (Fig 38) and for directional clarification see (Fig 39), the white block mounts close to the aux plug.

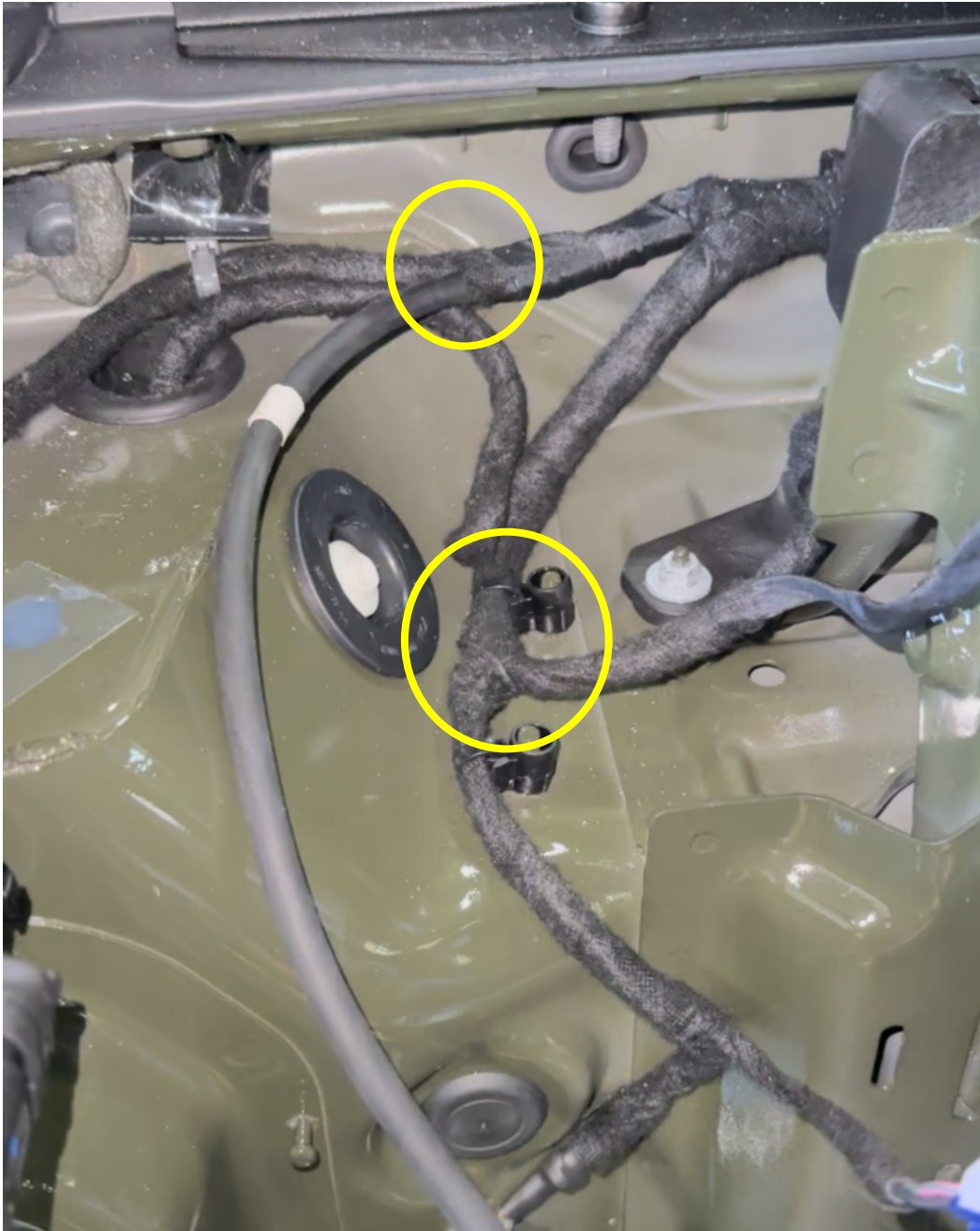


Figure 37

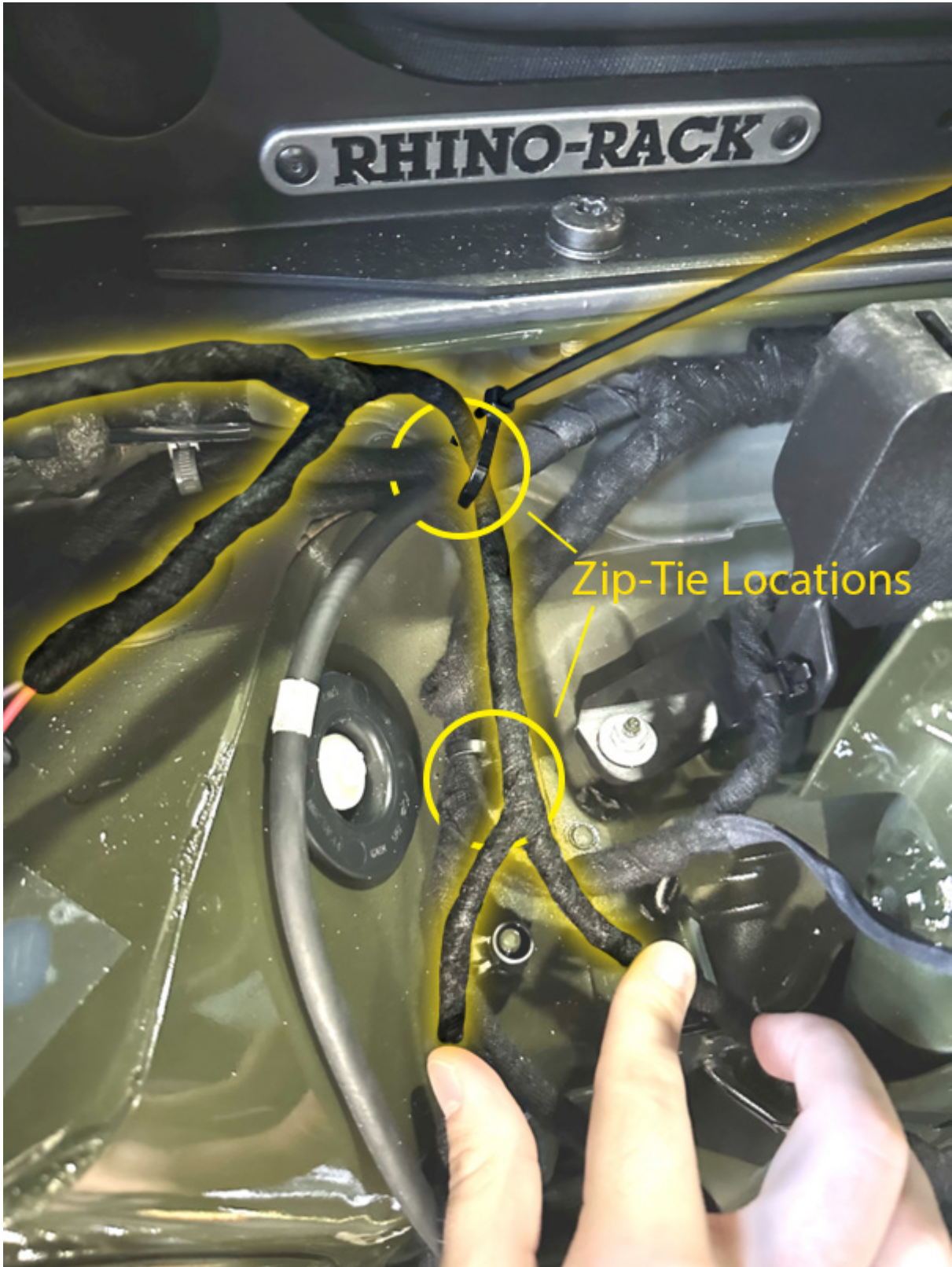


Figure 38

17. Moving down from the lower T-junction mount the white power outlet connector near the roll bar and plug in the vehicle harness.



Figure 39



Figure 40

**FOR VEHICLES MY2024+ SKIP TO STEP 21.
FOR VEHICLES MY2023 AND OLDER:**

18. Using fuse cover as a template for placement mark the hole location (Fig. 42) in the side panel (Fig 41). Drill out $\frac{1}{4}$ " hole in the plastic side panel and the fuse cover that was previously set aside, make sure the hole isn't lined up with the interior ribbing (Fig 43). Then attach the fuse cover with the provided hardware.



Figure 41 (left), 42 (center), and 43 (right)



19. Begin attaching wires to their corresponding connectors if not already completed and reassemble the interior of the vehicle.

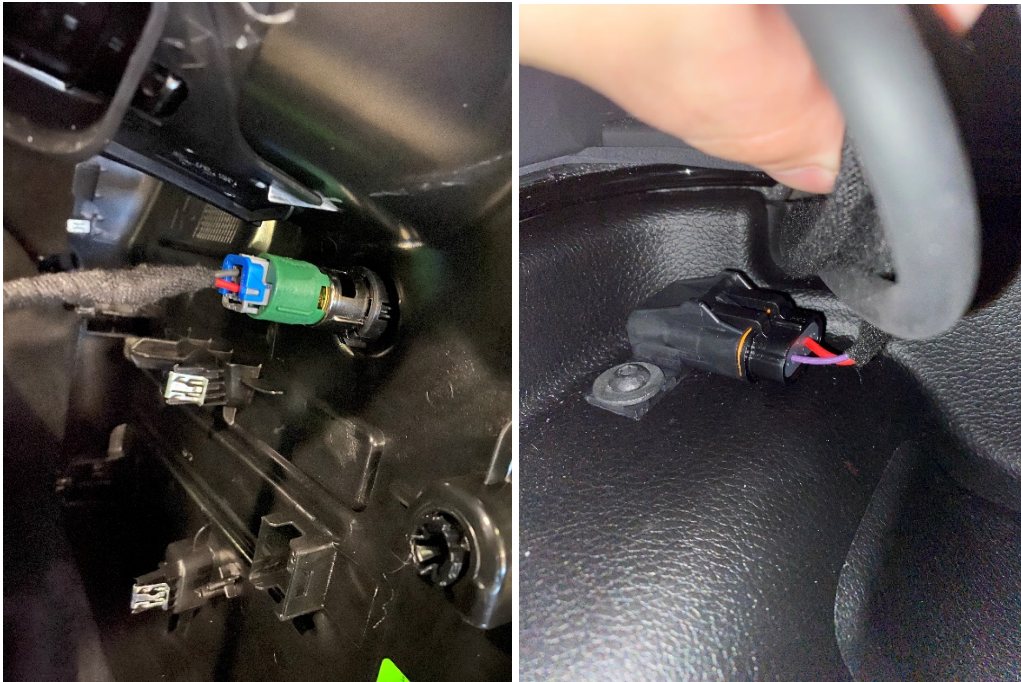


Figure 44 (top right), 45 (top left), and 46 (bottom)

20. Skip to step 24.

FOR VEHICLES MY2024+:

21. Position the fuse cover as shown in (Fig 48 and 49) below and mark the hole location. Then using a ¼" drill bit a hole through the side panel (Fig 47) and the plastic fuse cover previously set aside. Then attach fuse cover with the provided black hardware to the plastic side panel.



Figure 47 (left) and 48 (right)

22. Trim out the below section highlighted in yellow.



Figure 49

Note: Drill as shown to avoid surface issues in the pocket of the side panel, be sure not to drill too deep as you could drill through the other side of the panel making a visible hole in the surface.



Figure 50

23. Reassemble the interior, making sure to feed the harness cords through the side panel window as shown below.



Figure 51

24. Drill out the two fastener and wire access holes into the previously removed wiper motor cover using the provided template on the last page (Fig 59). Fasten the provided light to the cover using the shorter stainless fasteners using a 3mm Allen wrench for the bolt and a 7mm socket for the nut, attach the wires and reinstall the wiper motor cover.

Note: **The holes of the template match the cover for proper orientation.**



Figure 52 (left) and 53 (right)



Figure 54



Figure 55

Power options for the rear hatch light:

- 25. There are two power options for the rear hatch light that require a fuse (circled below) to alternate position according to which option is desired.

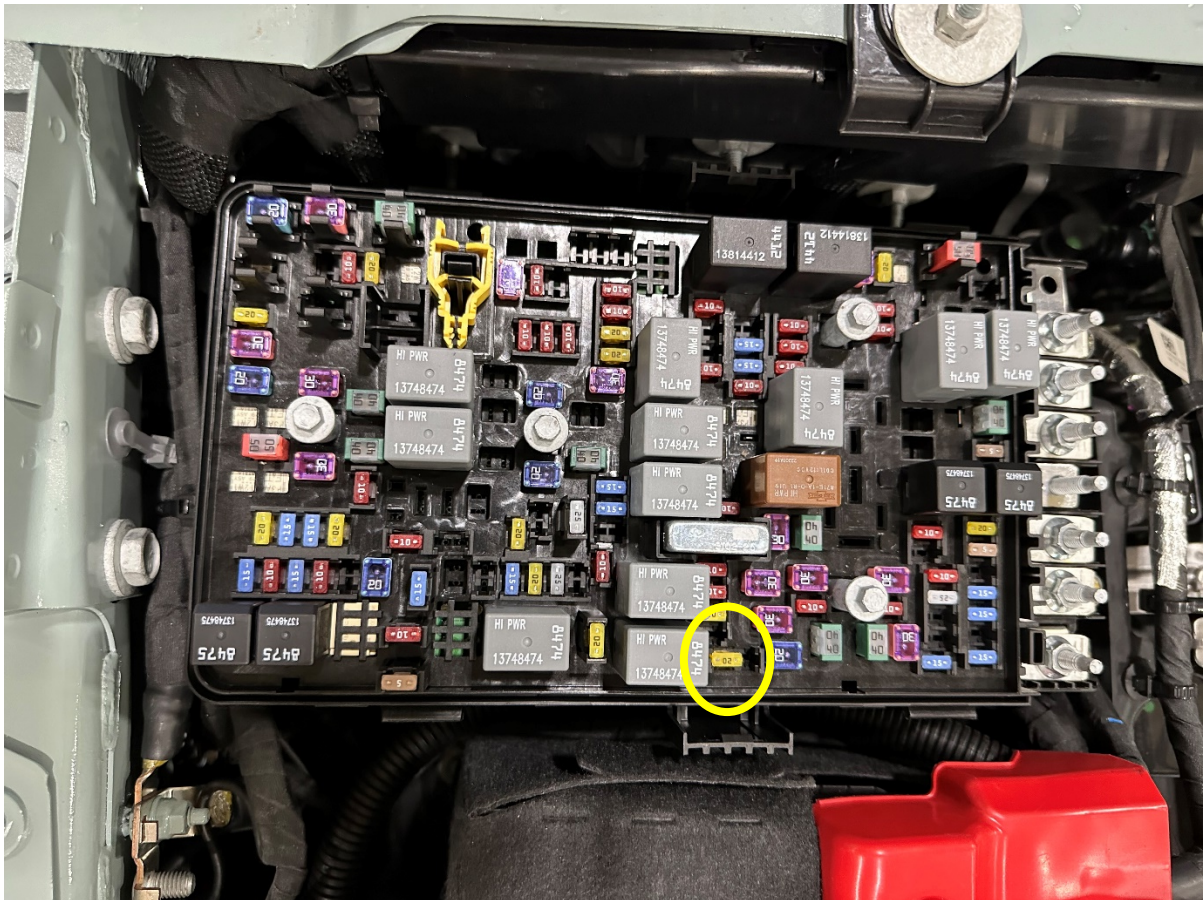
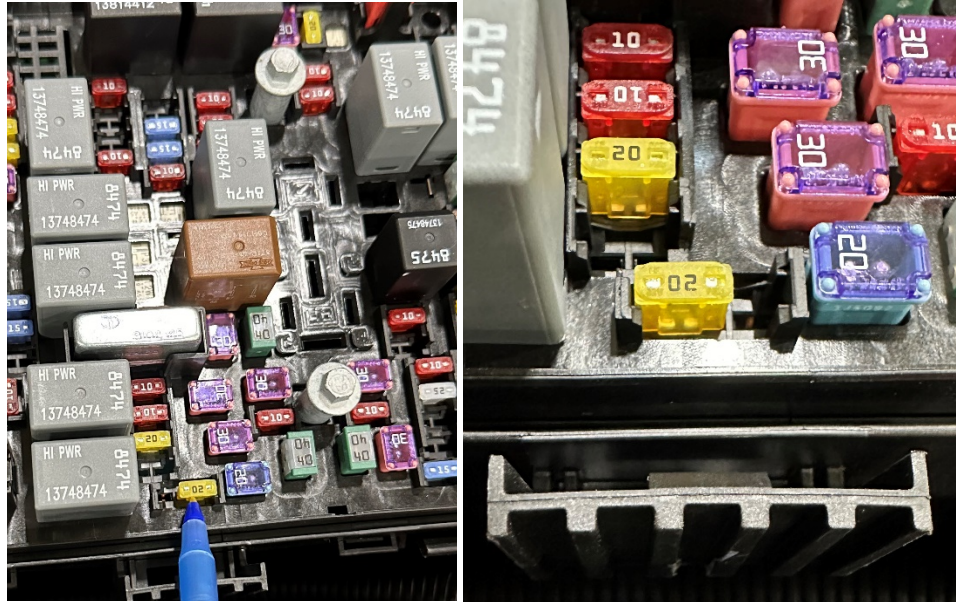


Figure 56

26. The factory setting for this fuse (pins located in the center and drivers side positions) the power to the hatch light is at constant power. If you want to tie the hatch light to be powered by ignition only you'll want to move the fuse over one pin to the left, shown in (Fig 58), so that the pins are located in the passenger's side and middle locations.



Figures 57 (right) and 58 (left)



Before drilling using the template ensure the scale is correct by using the 1"x1" box in the corner

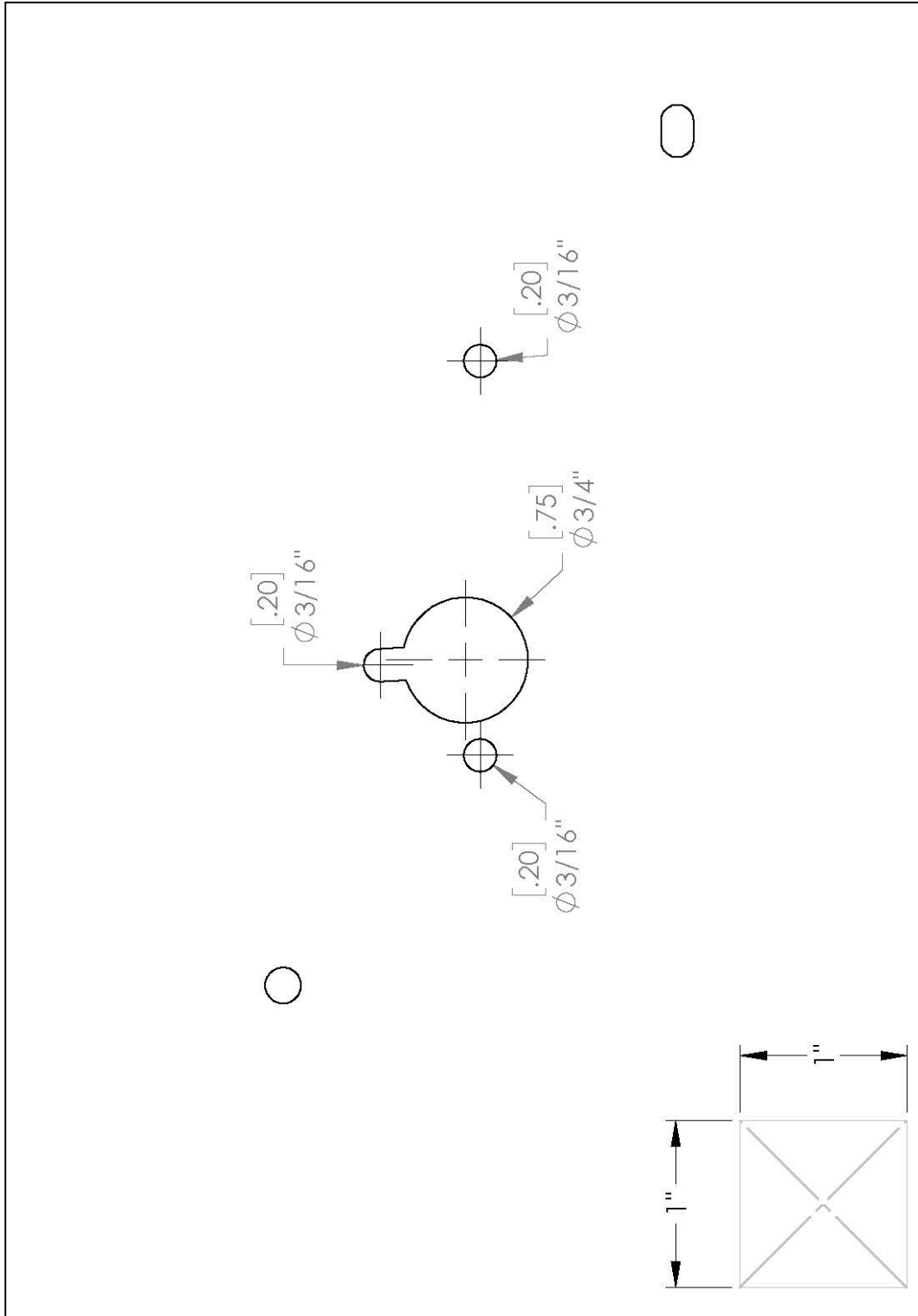


Figure 59