



# VERTICAL TIRE MOUNT

## 2018+ JEEP GLADIATOR

\*Trail Rail System is required to be installed in Truck Bed before Tire Mount can be installed.

### PLEASE READ ENTIRELY BEFORE YOU START

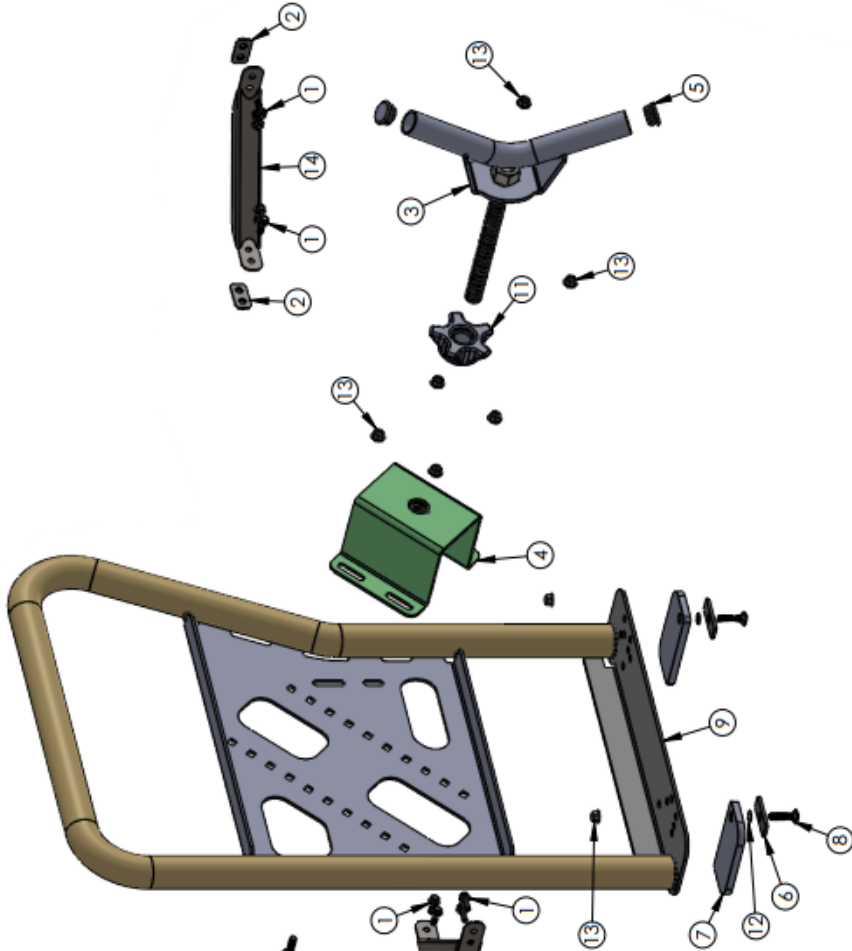
To guarantee a quality installation, we recommend reading these instructions thoroughly before beginning any work. These instructions assume a certain amount of mechanical ability and are not written nor intended for someone not familiar with auto repair.

### TABLE OF CONTENTS

- I. Setting up Vertical Tire Mount
- II. Installation with T-Track
- III. Mounting Tire

### REQUIRED TOOLS

Common Hand Tools  
Drill  
1/2" Drill Bit  
5/16" Drill Bit  
Center Punch  
Deburring Tool  
Rust Preventative such as Permatex Rust Treatment



| ITEM NO. | Part No.       | DESCRIPTION  | QTY. |
|----------|----------------|--|------|
| 1        | AEV91153AA     | M8 X 1.25 X 25 FLANGED HEX CAP SCREW, PS11036 BLACK          | 8    |
| 2        | ACPR0119AA     | WELDMENT NUT PLATE, JT VTM EXTRUSION KIT                     | 4    |
| 3        | ACPR1035AA     | WELDMENT, TRUCK BED TIRE CARRIER, RETAINER HANDLE            | 1    |
| 4        | ACPR1033AB     | WELDMENT, TRUCK BED TIRE CARRIER, CENTER BRACKET             | 1    |
| 5        | CCF-1 172-8-12 | PLUG, TUBING ROUND, CCF 1-1.5-8-12                           | 2    |
| 6        | ACPR1037AA     | SPACER, TRUCK BED TIRE CARRIER, BACK                         | 6    |
| 7        | ACPR1023AA     | SPACER, TRUCK BED TIRE CARRIER, BOTTOM GLADIATOR             | 2    |
| 8        | B-98930A219    | M10 X 1.5 X 40 CARRIAGE BOLT, CLASS 8.8                      | 4    |
| 9        | ACPR1032AD     | WELDMENT, TRUCK BED TIRE CARRIER, TUBE, FULL SIZE            | 1    |
| 10       | 98930A217      | M10 X 1.5 X 35 CARRIAGE BOLT, CLASS 8.8                      | 4    |
| 11       | ACPR1029AA     | BUSHING, TRUCK BED TIRE CARRIER, CENTER                      | 1    |
| 12       | 94813A-600     | M10 ROUND PUSH NUT   | 4    |
| 13       | AEV93036AA     | M10 X 1.5 FLANGE NUT, NON LOCKING CLASS 10.9 [PS11036-BLACK] | 8    |
| 14       | ACPR1073AA     | TUBULAR CORNER GUSSET, JT VTM EXTRUSION KIT                  | 2    |

B

A



## I. SETTING UP VERTICAL TIRE MOUNT

1. Physically measure the diameter of the tire you are using. DO NOT go off the advertised size listed on the sidewall (fig. 1) ex: 37 x 12.50 Tire measures 36".
  - A. Divide the diameter measurement in half to calculate the radius ex:  $36''/2 = 18''$ .
  - B. Subtract  $1/4''$  from the radius to account for material thickness of the Tire Carrier ex:  $18'' - 1/4'' = 17\ 3/4''$

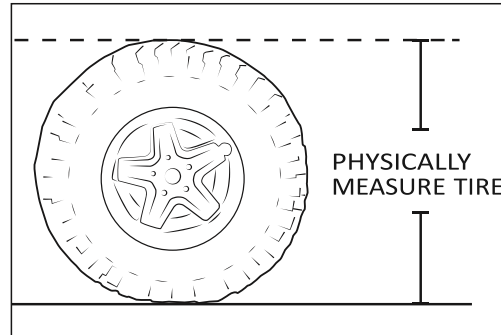


Figure 1

2. Use the final dimension from 1-B to position the Tire Mount on the Tire Carrier (fig. 2).

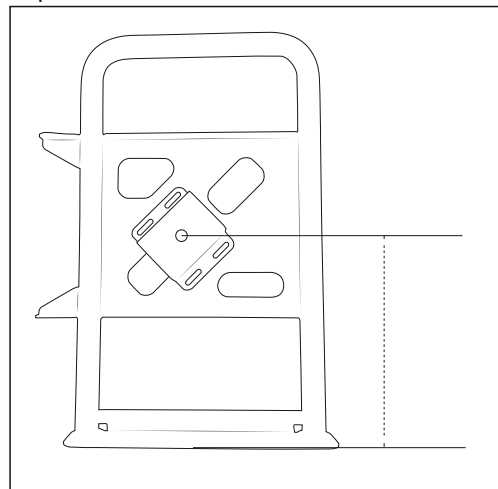


Figure 2

3. Install four M10x35 carriage bolts through the back side of the Tire Carrier. Secure with M10 nuts and tighten until snug. Some adjustment may be required, nuts will be torqued later

## II. INSTALLATION

1. Install the Gladiator Trail Rail System per the kits instructions.
2. Assemble two backer plates and M10x40 Carriage bolts.
3. Temporarily remove the two inboard screws holding the bulkhead T-Track to the bed.
4. Slide backer plate assemblies into the track then install a second backer plate and retaining washer on each bolt (fig. 3).

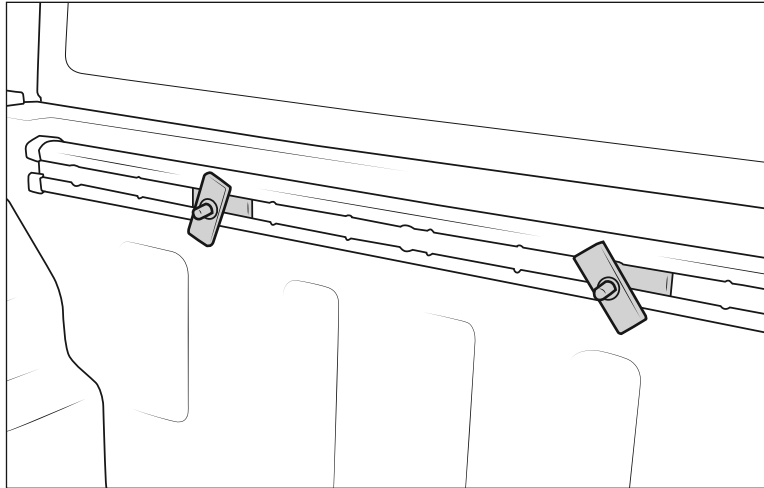


Figure 3

4. Position the bolts approximately 13 7/16" and 28 11/16" from the left, inside bedside, then reinstall screws into the track.
5. Lift Tire Carrier into vehicle bed and slide bolts into position with the Tire Carrier.
6. Place the two provided Spacers under the Tire Carrier as shown (fig. 4). Adjust the Tire Carrier position side to side to align with spacer holes. Check that the Bulkhead Bracket is aligned with the Tire Carrier and adjust as necessary. NOTE: The Spacers should be pushed all the way forward, this will locate the Tire Carrier position front to back.

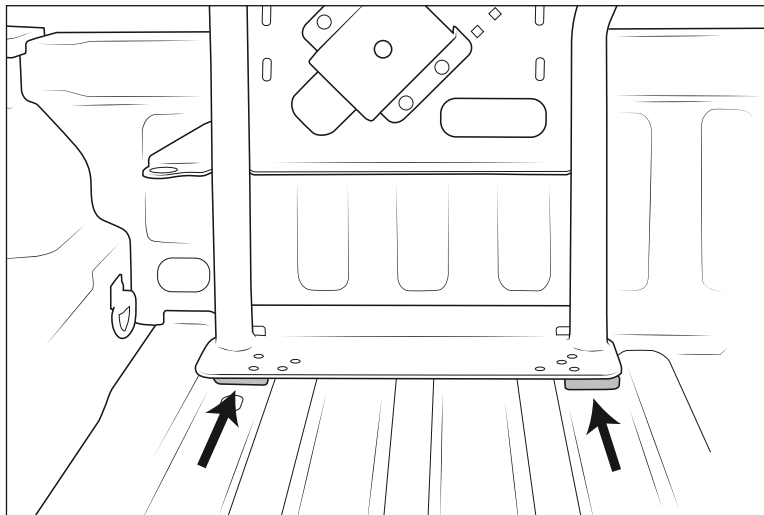


Figure 4



7. Mark the two hole locations on the bed floor (fig. 5)

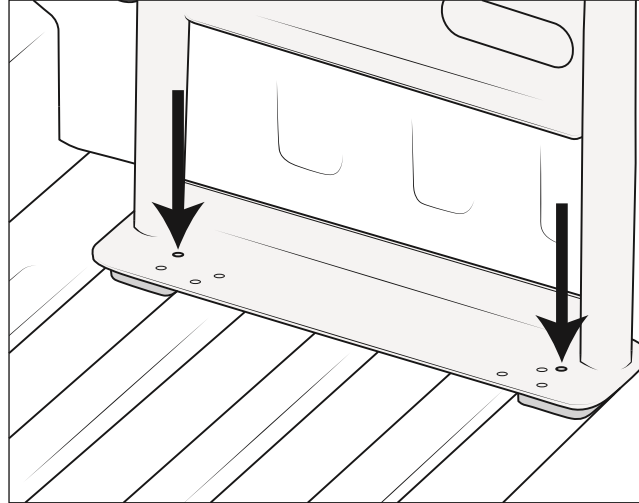


Figure 5

8. Remove Tire Carrier, center punch and drill holes to 1/2".
9. Deburr and prep bare metal with rust preventative.
10. Insert two M10x40 carriage bolts and backer plates (with shank) through the bed and hold in place with retaining washers.
11. Place the Spacers and Tire Carrier into position with the two bed floor bolts and two T-Track bolts (fig. 6). Install M10 nuts on the bolts.

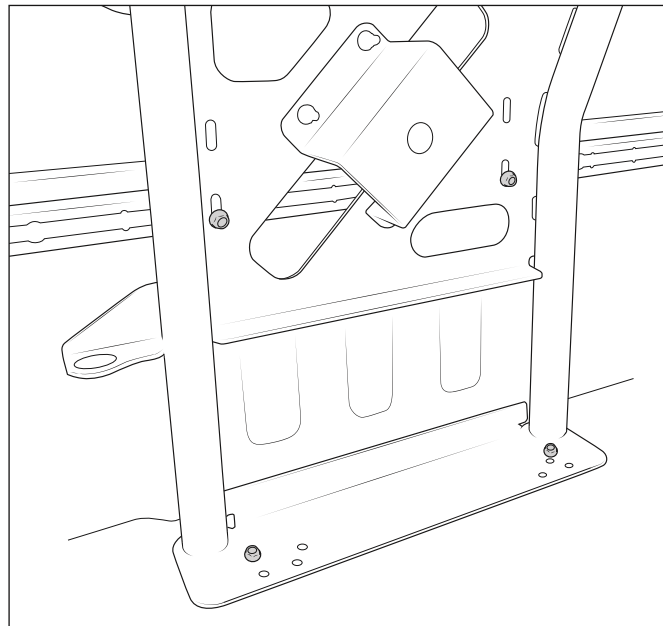


Figure 6



12. Insert a T-slot nut plate into both the forward and side bed rail by the corners of the bed (fig. 7). Align the corner gusset bracket to the two rails (fig. 8) and position the nut plates to align with the bracket holes. Secure down with four M8 x 25mm bolts. Follow these steps for the other side of the bed as well.

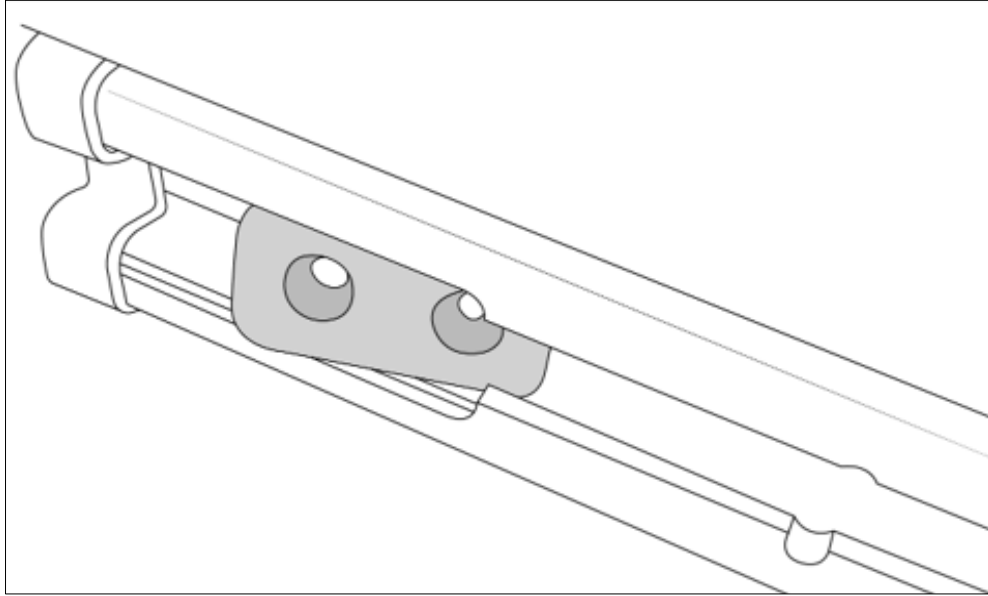


Figure 7

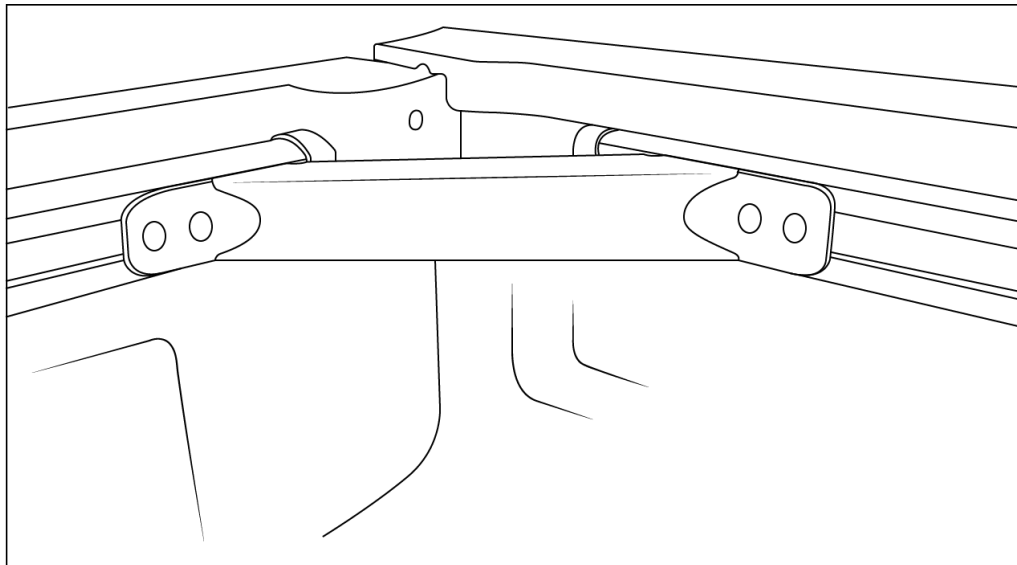


Figure 8

13. Torque all M10 bolts/nuts to 46 lb-ft and all M8 bolts/nuts to 16 lb-ft.



### III. MOUNTING TIRE

1. Slide molded spacer onto threaded portion of handle (fig. 9).
2. Install 1 1/2" end caps on to handle (fig. 9).

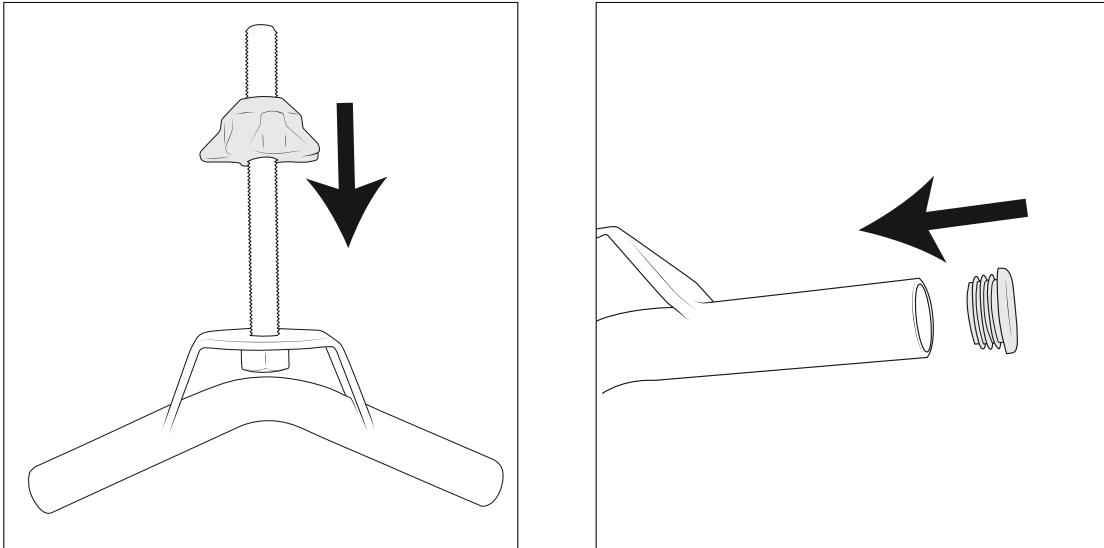


Figure 9

3. Insert handle with molded spacer through spare tire and thread into the Center Bracket until tight. NOTE: DO NOT HOLD TIRE IN AIR. If the spare tire is not resting on the bed of the truck, adjust the Center Bracket to sit lower on the Tire Carrier (See Section I).