



# Mopar Bed Step Relocation Bracket for AEV Rear Bumper

2019+ RAM 1500 and 2019+ RAM 2500

## NEW PRODUCT

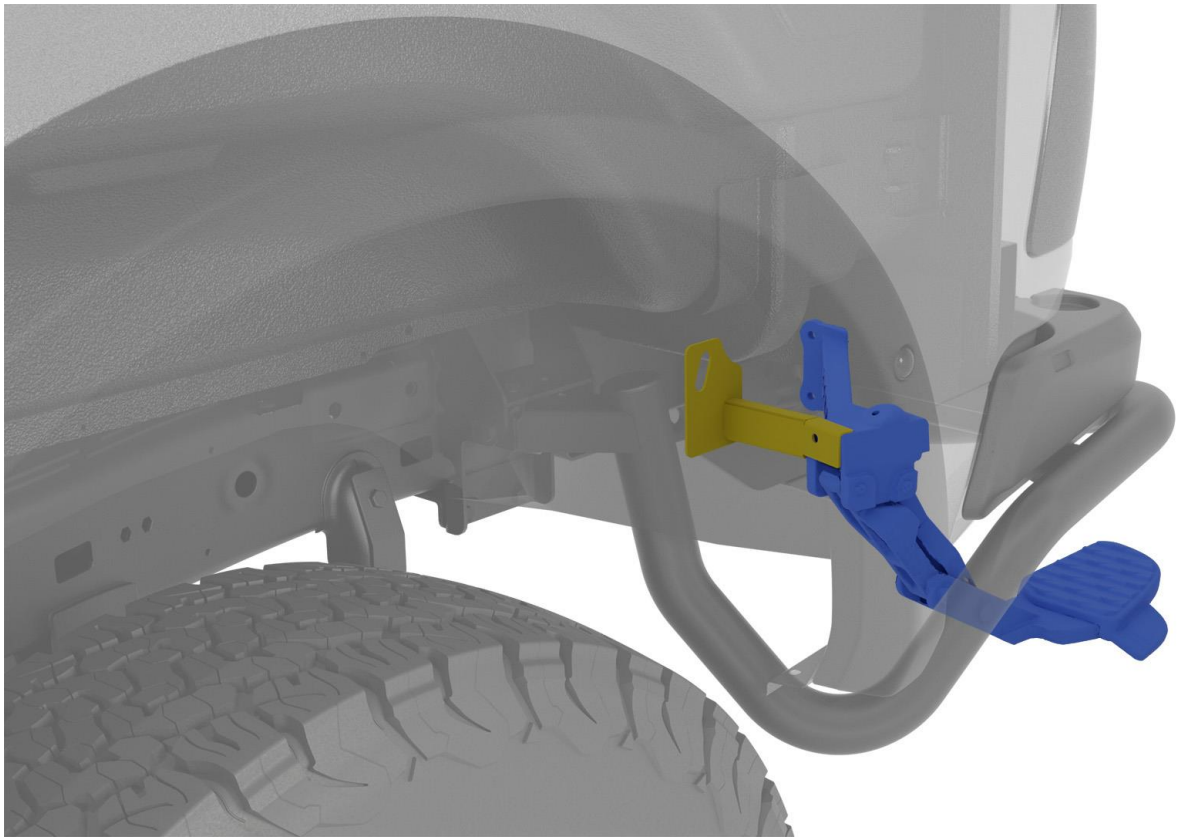
Please visit [www.aev-conversions.com](http://www.aev-conversions.com) to view the most current installation guide for this product.

This is a new product and we want to make sure that you receive the latest and most accurate information based on customer feedback, product revisions, and/or model year updates. We value customer feedback, so we encourage you to contact our Technical Support department if you have any suggestions on how to make the installation of this product easier or if you have any questions regarding the installation of this product. AEV's Technical Support can be reached by email at [tech@aev-conversions.com](mailto:tech@aev-conversions.com) or by giving us a call at (248)-926-0256.

### PLEASE READ BEFORE YOU START

To guarantee a quality installation, we recommend reading these instructions thoroughly before beginning any work. These instructions assume a certain amount of mechanical ability and are not written nor intended for someone not familiar with auto repair.

## Product View – Relocation Bracket Highlighted in Yellow



### INCLUDED PARTS

Relocation Bracket

### QTY

1

### REQUIRED TOOLS

Common Hand Tools

## I. VEHICLE PREPARATION

1. Remove the bolt that connects the bracket to the Mopar Bed Step. (Figure 1)



Figure 1



## II. INSTALLATION

1. Using the bolts provided from the Mopar Bed Step, install the rearward facing bolts. (Figure 2)



Figure 2

2. Using the bolts provided from the Mopar Bed Step, install the remaining 2 bolts that connect the AEV bracket to the Mopar Bed Step. (Figure 3)

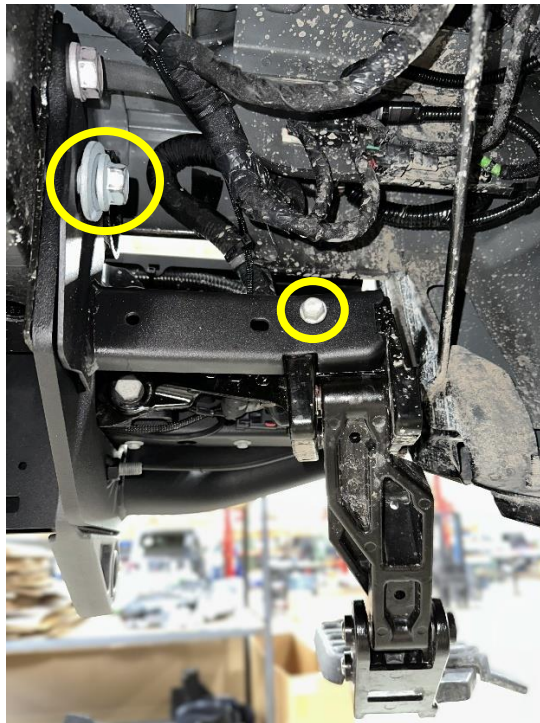


Figure 3

3. Tighten down bolts to the appropriate torque spec using chart below.

Hardware	Torque Spec
M8 bolts	24Nm (18lb-ft)
M10 bolts	67Nm (49lb-ft)
M16 bolts	285Nm (210lb-ft)